

— ABLYBIO, Help Your Research



TTC11/FIS1 Rabbit mAb

货号: **AYT1023**

产品信息

反应	Human,Mouse,Rat
宿主	Rabbit
克隆性	Polyclonal
预测反应	
应用	WB IHC ICC/IF IP
推荐浓度	WB: 1:1000-1:5000 IHC: 1:100-1:800 IF : 1:100-1:800; IP : 1:50-1:200
理论分子量	16kDa
实测分子量	17KDa
形式	Liquid
保存条件	Store at -20°C. Avoid freeze / thaw cycles. Buffer: PBS with 0.05% proclin300,50% glycerol,pH7.3.
偶联物	Unconjugated
阳性对照	HeLa,HepG2,MCF7,Mouse brain,Mouse heart,Rat brain
细胞定位	Mitochondrion outer membrane,Peroxisome membrane,Single-pass membrane protein
纯化	Affinity purification

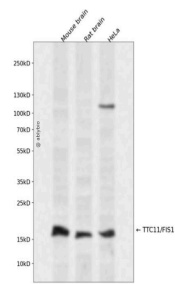
抗原信息

抗原信息	Recombinant fusion protein containing a sequence corresponding to amino acids 1-122 of human TTC11/FIS1 (NP_057152.2).
------	------------------------------------------------------------------------------------------------------------------------

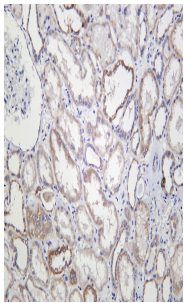
靶点信息

研究背景	The balance between fission and fusion regulates the morphology of mitochondria. TTC11 is a component of a mitochondrial complex that promotes mitochondrial fission (James et al., 2003 [PubMed 12783892]). [supplied by OMIM, Mar 2008]
基因ID	51024
基因名	FIS1
Swiss	Q9Y3D6 (https://www.uniprot.org/uniprotkb/Q9Y3D6/entry)
别名	FIS1,CGI-135,TTC11,fission,mitochondrial 1,TTC11/FIS1 Rabbit pAb,FIS1 homolog,Tetratricopeptide repeat protein 11

产品验证



Western blot analysis of TTC11/FIS1 expressed in Mouse brain,Rat brain,HeLa using TTC11/FIS1 at 1:1000. Secondary antibody: HRP Goat Anti-Rabbit IgG (H+L) at 1:5000. Lysates/proteins: 30ug per lane. Blocking buffer: 5% non-fat dry milk in TBST. Detection: ECL Enhanced Kit. Exposure time: 120s.



Human kidney was stained with TTC11/FIS1 Rabbit antibody

实验步骤

访问官网浏览详情: www.ablybio.cn (<https://www.ablybio.cn/>www.ablybio.cn)