

— ABLYBIO, Help Your Research



ERN2 Rabbit pAb

货号: **AYT1012**

产品信息

反应	Human,Mouse,Rat
宿主	Rabbit
克隆性	Polyclonal
预测反应	
应用	IHC ICC/IF
推荐浓度	IHC: 1: 50-200 ICC/IF: 1: 100-300
理论分子量	102 kDa
实测分子量	102 kDa
形式	Liquid
保存条件	Store at -20°C. Avoid freeze / thaw cycles. Buffer: PBS with 0.75% BSA,50% glycerol,pH7.3.
偶联物	
阳性对照	
细胞定位	Endoplasmic reticulum membrane ; Single-pass type I membrane protein .
纯化	Affinity purification

抗原信息

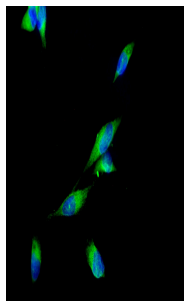
抗原信息	The antiserum was produced against synthesized peptide derived from human ERN2. AA range:830-885
------	--------------------------------------------------------------------------------------------------

靶点信息

研究背景	Induces translational repression through 28S ribosomal RNA cleavage in response to ER stress. Pro-apoptotic.
------	--------------------------------------------------------------------------------------------------------------

基因ID	10595
基因名	ERN2
Swiss	Q76MJ5 (https://www.uniprot.org/uniprotkb/Q76MJ5/entry)
别名	ERN2 antibody; IRE2Serine/threonine-protein kinase/endoribonuclease IRE2 antibody; Endoplasmic reticulum-to-nucleus signaling 2 antibody; Inositol-requiring protein 2 antibody; hIRE2p antibody; Ire1-beta antibody; IRE1b) [Includes: Serine/threonine-protein kinase antibody; EC 2.7.11.1); Endoribonuclease antibody;

产品验证



Immunofluorescence analysis of NCI-H1975 cells labelling ERN2 with . The cells were fixed with cold 100% methanol (10min, 4°C) and blocked in 1% BSA/10% normal goat serum/0.3M glycine in 0.1% PBS-Tween 20 for 1h. The cells were then incubate with Goat Anti-Rabbit IgG Fluor488 (1:200, shown in green) at room temprature for 1h.

实验步骤

访问官网浏览详情: www.ablybio.cn (<https://www.ablybio.cn/www.ablybio.cn>)