

— ABLYBIO, Help Your Research



# p38 MAPK (Phospho Thr180/Tyr182) Rabbit mAb

货号: **AYT1008**

## 产品信息

|       |  |
|-------|--|
| 反应    | Mouse,Rat,Human  |
| 宿主    | Rabbit   |
| 克隆性   | Monoclonal   |
| 预测反应  | <b>IHC 1:200-1:1000; WB 1:1000-1:3000; IF 1:200-1:1000; ELISA 1:5000-1:20000; IP 1:50-1:200:</b>     |
| 应用    | WB IHC ICC/IF IP   |
| 推荐浓度  |  |
| 理论分子量 |  |
| 实测分子量 | 43KDa  |
| 形式    | Liquid   |
| 保存条件  | Store at -20°C. Avoid freeze / thaw cycles.<br>Buffer: PBS with 0.05% proclin300,50% glycerol,pH7.3. |
| 偶联物   | Unconjugated   |
| 阳性对照  | C6,NIH/3T3   |
| 细胞定位  | cytoplasm,cytosol,nucleoplasm,nucleus  |
| 纯化    | Affinity purification  |

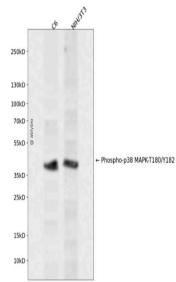
## 抗原信息

|      |  |
|------|--|
| 抗原信息 | A synthetic phosphorylated peptide around T180 & Y182 of human MAPK11/ MAPK14/MAPK12MAPK11 (N P_002742.3). |
|------|--|

## 靶点信息

|       |   |
|-------|---|
| 研究背景  | This gene encodes a member of a family of protein kinases that are involved in the integration of biochemical signals for a wide variety of cellular processes, including cell proliferation, differentiation, transcriptional regulation, and development. The encoded protein can be activated by proinflammatory cytokines and environmental stresses through phosphorylation by mitogen activated protein kinase kinases (MKKs). Alternative splicing results in multiple transcript variants. [provided by RefSeq, Mar 2014] |
| 基因ID  | 5600,6300,5603,1432   |
| 基因名   | MAPK11,MAPK12,MAPK13,MAPK14   |
| Swiss | Q15759 ( <a href="https://www.uniprot.org/uniprotkb/Q15759/entry">https://www.uniprot.org/uniprotkb/Q15759/entry</a> ), P53778 ( <a href="https://www.uniprot.org/uniprotkb/P53778/entry">https://www.uniprot.org/uniprotkb/P53778/entry</a> ), O15264 ( <a href="https://www.uniprot.org/uniprotkb/O15264/entry">https://www.uniprot.org/uniprotkb/O15264/entry</a> ), Q16539 ( <a href="https://www.uniprot.org/uniprotkb/Q16539/entry">https://www.uniprot.org/uniprotkb/Q16539/entry</a> )                                    |
| 别名    | MAPK14,CSBP,CSBP1,CSBP2,CSPB1,EXIP,Mxi2,PRKM14,PRKM15,RK,SAPK2A,p38,p38ALPHA,p38 MAPK,Phospho-p38 MAPK-T180/Y182 Rabbit pAb,MAPK11,MAPK12,MAPK13,Mitogen-activated protein kinase p38 beta,Stress-activated protein kinase 2b,p38-2,Extracellular signal-regulated kinase 6,Mitogen-activated protein kinase p38 gamma  |

## 产品验证



Western blot analysis of Phospho-p38 MAPK-T180/Y182 expressed in C6,NIH/3T3 using Phospho-p38 MAPK-T180/Y182 Rabbit pAb at 1:1000. Secondary antibody: HRP Goat Anti-Rabbit IgG (H+L) at 1:5000. Lysates/proteins: 30ug per lane. Blocking buffer: 5% non-fat dry milk in TBST. Detection: ECL Enhanced Kit. Exposure time: 120s.

## 实验步骤

访问官网浏览详情: [www.ablybio.cn](http://www.ablybio.cn) (<https://www.ablybio.cn/www.ablybio.cn>)