

— ABLYBIO, Help Your Research



MRC1/CD206 Antibody

货号: AYP6116

产品信息

反应	Human,Mouse,Rat
宿主	Rabbit
克隆性	Polyclonal
预测反应	
应用	WB IHC IF ELISA
推荐浓度	WB: 1:500 - 1:2000 IHC: 1:50 - 1:200 IF: 1:50 - 1:200
理论分子量	56kDa/166kDa
实测分子量	
形式	Liquid
保存条件	Store at -20°C. Avoid freeze / thaw cycles. Buffer: PBS with 0.75% BSA,50% glycerol,pH7.3.
偶联物	Unconjugated
阳性对照	Mouse spleen,Rat liver
细胞定位	Cell membrane,Endosome membrane,Single-pass type I membrane protein
纯化	Affinity purification

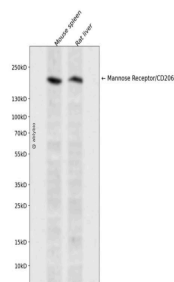
抗原信息

抗原信息	Synthesized peptide derived from Human MRC1/CD206.
------	--

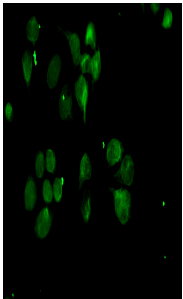
靶点信息

研究背景	The recognition of complex carbohydrate structures on glycoproteins is an important part of several biological processes, including cell-cell recognition, serum glycoprotein turnover, and neutralization of pathogens. The protein encoded by this gene is a type I membrane receptor that mediates the endocytosis of glycoproteins by macrophages. The protein has been shown to bind high-mannose structures on the surface of potentially pathogenic viruses, bacteria, and fungi so that they can be neutralized by phagocytic engulfment.
基因ID	4360
基因名	MRC1
Swiss	P22897
别名	MRC1,CD206,CLEC13D,CLEC13DL,MMR,MRC1L1,bA541I19.1,hMR,MRC1/CD206 Antibody,C-type lectin domain family 13 member D,C-type lectin domain family 13 member D-like,Human mannose receptor,Macrophage mannose receptor 1-like protein 1,MRC1/CD206

产品验证



Western blot analysis of Mannose Receptor/CD206 expressed in Mouse spleen,Rat liver using Mannose Receptor/CD206 Rabbit pAb at 1:1000. Secondary antibody: HRP Goat Anti-Rabbit IgG (H+L) at 1:5000. Lysates/proteins: 30ug per lane. Blocking buffer: 5% non-fat dry milk in TBST. Detection: ECL Enhanced Kit. Exposure time: 120s.



Immunofluorescence analysis of HeLa cells labelling CD206 with . The cells were fixed with cold 100% methanol (10min, 4°C) and blocked in 1% BSA/10% normal goat serum/0.3M glycine in 0.1% PBS-Tween 20 for 1h. The cells were then incubate with Goat Anti-Rabbit IgG Fluor488 (1:200, shown in green) at room temperature for 1h.

实验步骤

访问官网浏览详情: www.ablybio.cn (<https://www.ablybio.cn/>www.ablybio.cn)