

# Phospho-PKCdelta-Y311 Rabbit pAb

货号: **AYP25469**

## 产品信息

反应	Human,Mouse
宿主	Rabbit
克隆性	Polyclonal
预测反应	
应用	WB
推荐浓度	<b>WB:</b> 1:500 - 1:2000
理论分子量	77kDa/80kDa
实测分子量	78kDa
形式	Liquid
保存条件	Store at -20°C. Avoid freeze / thaw cycles. Buffer: PBS with 0.02% sodium azide,50% glycerol,pH7.3.
偶联物	Unconjugated
阳性对照	U-937,RAW 264.7
细胞定位	Cell membrane,Cytoplasm,Endoplasmic reticulum,Mitochondrion,Nucleus,Peripheral membrane protein,perinuclear region
纯化	Affinity purification

## 抗原信息

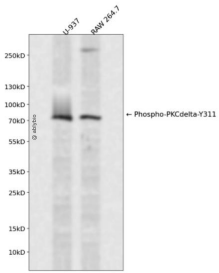
抗原信息	A synthetic phosphorylated peptide around Y311 of rat PKC delta (NP_579841.1).
序列	VGIYQ

## 靶点信息

研究背景	<p>Protein kinase C (PKC) is a family of serine- and threonine-specific protein kinases that can be activated by calcium and the second messenger diacylglycerol. PKC family members phosphorylate a wide variety of protein targets and are known to be involved in diverse cellular signaling pathways. PKC family members also serve as major receptors for phorbol esters, a class of tumor promoters. Each member of the PKC family has a specific expression profile and is believed to play distinct roles in cells. The protein encoded by this gene is one of the PKC family members. Studies both in human and mice demonstrate that this kinase is involved in B cell signaling and in the regulation of growth, apoptosis, and differentiation of a variety of cell types. Alternatively spliced transcript variants encoding the same protein have been observed.</p>
------	--

基因ID	5580
基因名	PRKCD
Swiss	Q05655
别名	PRKCD;ALPS3;CVID9;MAY1;PKCD;nPKC-delta;PKCδ

## 产品验证



Western blot analysis of Phospho-PKCdelta-Y311 expressed in U-937,RAW 264.7 using Phospho-PKC delta-Y311 Rabbit pAb at 1:1000. Secondary antibody: HRP Goat Anti-Rabbit IgG (H+L) at 1:5000. Ly sates/proteins: 30ug per lane. Blocking buffer: 5% non-fat dry milk in TBST. Detection: ECL Enhance d Kit. Exposure time: 120s.

## 实验步骤

访问官网浏览详情: [www.ablybio.cn](http://www.ablybio.cn)