

# Phospho-PLCG2-Y1217 Rabbit pAb

货号: AYP25465

## 产品信息

反应	Human,Mouse
宿主	Rabbit
克隆性	Polyclonal
预测反应	
应用	WB IHC
推荐浓度	<b>WB:</b> 1:500 - 1:2000 <b>IHC:</b> 1:50 - 1:200
理论分子量	147kDa
实测分子量	150kDa
形式	Liquid
保存条件	Store at -20°C. Avoid freeze / thaw cycles. Buffer: PBS with 0.01% thiomersal,50% glycerol,pH7.3.
偶联物	Unconjugated
阳性对照	Raji
细胞定位	cytoplasm,cytosol,extracellular exosome,perinuclear region of cytoplasm,plasma membrane,ruffle membrane
纯化	Affinity purification

## 抗原信息

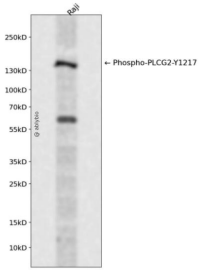
抗原信息	A synthetic phosphorylated peptide around Y1217 of human PLCG2 (NP_002652.2).
序列	FLYDT

## 靶点信息

研究背景	The protein encoded by this gene is a transmembrane signaling enzyme that catalyzes the conversion of 1-phosphatidyl-1D-myo-inositol 4,5-bisphosphate to 1D-myo-inositol 1,4,5-trisphosphate (IP3) and diacylglycerol (DAG) using calcium as a cofactor. IP3 and DAG are second messenger molecules important for transmitting signals from growth factor receptors and immune system receptors across the cell membrane. Mutations in this gene have been found in autoinflammation, antibody deficiency, and immune dysregulation syndrome and familial cold autoinflammatory syndrome 3.
------	---

基因ID	5336
基因名	PLCG2
Swiss	P16885
别名	PLCG2;APLAID;FCAS3;PLC-IV;PLC-gamma-2

## 产品验证



Western blot analysis of Phospho-PLCG2-Y1217 expressed in Raji using Phospho-PLCG2-Y1217 Rabbit pAb at 1:1000. Secondary antibody: HRP Goat Anti-Rabbit IgG (H+L) at 1:5000. Lysates/proteins: 30ug per lane. Blocking buffer: 5% non-fat dry milk in TBST. Detection: ECL Enhanced Kit. Exposure time: 120s.

## 实验步骤

访问官网浏览详情: [www.ablybio.cn](http://www.ablybio.cn)