

TLR9 Rabbit pAb

货号: **AYP25458**

产品信息

反应	Human,Mouse,Rat
宿主	Rabbit
克隆性	Polyclonal
预测反应	WB: Sus scrofa , Mus musculus , Homo sapiens
应用	WB IHC
推荐浓度	WB: 1:500 - 1:1000 IHC: 1:50 - 1:200
理论分子量	109kDa/114kDa/115kDa/118kDa
实测分子量	135KDa
形式	Liquid
保存条件	Store at -20°C. Avoid freeze / thaw cycles. Buffer: PBS with 0.05% proclin300,50% glycerol,pH7.3.
偶联物	Unconjugated
阳性对照	Raji
细胞定位	Cytoplasmic vesicle,Endoplasmic reticulum membrane,Endosome,Lysosome,Single-pass type I membrane protein,phagosome
纯化	Affinity purification

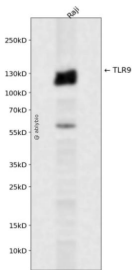
抗原信息

抗原信息	A synthetic peptide corresponding to a sequence within amino acids 400-500 of human TLR9 (NP_059138.1).
序列	MNFINQAQLGIFRAFPGLRYVDLSDNRISGASELTATMGEADGGKQVWLQPGDLAPAPVDTPSSEDFRPN CSTLNFTLDL SRNNLVTVPQEMFAQLSHLQC

靶点信息

研究背景	The protein encoded by this gene is a member of the Toll-like receptor (TLR) family which plays a fundamental role in pathogen recognition and activation of innate immunity. TLRs are highly conserved from <i>Drosophila</i> to humans and share structural and functional similarities. They recognize pathogen-associated molecular patterns (PAMPs) that are expressed on infectious agents, and mediate the production of cytokines necessary for the development of effective immunity. The various TLRs exhibit different patterns of expression. This gene is preferentially expressed in immune cell rich tissues, such as spleen, lymph node, bone marrow and peripheral blood leukocytes. Studies in mice and human indicate that this receptor mediates cellular response to unmethylated CpG dinucleotides in bacterial DNA to mount an innate immune response.
基因ID	54106
基因名	TLR9
Swiss	Q9NR96
别名	TLR9;CD289

产品验证



Western blot analysis of TLR9 expressed in Raji using TLR9 Rabbit pAb at 1:1000. Secondary antibody: HR P Goat Anti-Rabbit IgG (H+L) at 1:5000. Lysates/proteins: 30ug per lane. Blocking buffer: 5% non-fat dry milk in TBST. Detection: ECL Enhanced Kit. Exposure time: 120s.

实验步骤

访问官网浏览详情: www.ablybio.cn