

Phospho-PLCG1-S1248 Rabbit pAb

货号: **AYP25442**

产品信息

反应	Human,Mouse,Rat
宿主	Rabbit
克隆性	Polyclonal
预测反应	
应用	WB IHC
推荐浓度	WB: 1:500 - 1:2000 IHC: 1:10 - 1:100
理论分子量	148kDa
实测分子量	149kDa
形式	Liquid
保存条件	Store at -20°C. Avoid freeze / thaw cycles. Buffer: PBS with 0.01% thiomersal,50% glycerol,pH7.3.
偶联物	Unconjugated
阳性对照	Jurkat
细胞定位	Cell projection,lamellipodium,ruffle
纯化	Affinity purification

抗原信息

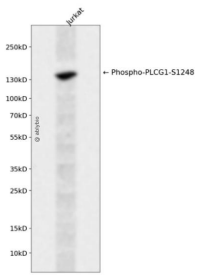
抗原信息	A synthetic phosphorylated peptide around S1248 of human PLCG1 (NP_002651.2).
序列	REGSF

靶点信息

研究背景	The protein encoded by this gene catalyzes the formation of inositol 1,4,5-trisphosphate and diacylglycerol from phosphatidylinositol 4,5-bisphosphate. This reaction uses calcium as a cofactor and plays an important role in the intracellular transduction of receptor-mediated tyrosine kinase activators. For example, when activated by SRC, the encoded protein causes the Ras guanine nucleotide exchange factor RasGRP1 to translocate to the Golgi, where it activates Ras. Also, this protein has been shown to be a major substrate for heparin-binding growth factor 1 (acidic fibroblast growth factor)-activated tyrosine kinase. Two transcript variants encoding different isoforms have been found for this gene.
------	--

基因ID	5335
基因名	PLCG1
Swiss	P19174
别名	PLCG1;NCKAP3;PLC-II;PLC1;PLC148;PLCgamma1

产品验证



Western blot analysis of Phospho-PLCG1-S1248 expressed in Jurkat using Phospho-PLCG1-S1248 Rabbit pAb at 1:1000. Secondary antibody: HRP Goat Anti-Rabbit IgG (H+L) at 1:5000. Lysates/proteins: 30u g per lane. Blocking buffer: 5% non-fat dry milk in TBST. Detection: ECL Enhanced Kit. Exposure time: 120s.

实验步骤

访问官网浏览详情: www.ablybio.cn