

# CLEC12A Rabbit pAb

货号: AYP25432

## 产品信息

反应	Human,Mouse,Rat
宿主	Rabbit
克隆性	Polyclonal
预测反应	
应用	WB
推荐浓度	<b>WB:</b> 1:500 - 1:2000
理论分子量	8kDa/24kDa/27kDa/30kDa/32kDa
实测分子量	24kDa
形式	Liquid
保存条件	Store at -20°C. Avoid freeze / thaw cycles. Buffer: PBS with 0.02% sodium azide,50% glycerol,pH7.3.
偶联物	Unconjugated
阳性对照	K-562
细胞定位	Cell membrane,Single-pass type II membrane protein
纯化	Affinity purification

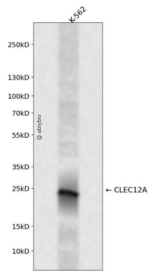
## 抗原信息

抗原信息	Recombinant fusion protein containing a sequence corresponding to amino acids 66-265 of human CLEC12A (NP_612210.4).
序列	VTLKIEMKKMNKLQNISEELQRNLSLQMSNMNINISNKIRNLSTTLQTIATKLCRELYSKEQEHKCKPCPRRWIWHKDSCYFLS DDVQTWQESKMACAAQNASLLKINNKNLEFIKSQRSYDYWLGLSPEEDSTRGMRVDNIINSSAWVIRNAPDLNNMYC GYINRLYQYYHCTYKKRMICEKMANPVQLGSTYFREA

## 靶点信息

研究背景	This gene encodes a member of the C-type lectin/C-type lectin-like domain (CTL/CTLD) superfamily. Members of this family share a common protein fold and have diverse functions, such as cell adhesion, cell-cell signaling, glycoprotein turnover, and roles in inflammation and immune response. The protein encoded by this gene is a negative regulator of granulocyte and monocyte function. Several alternatively spliced transcript variants of this gene have been described, but the full-length nature of some of these variants has not been determined. This gene is closely linked to other CTL/CTLD superfamily members in the natural killer gene complex region on chromosome 12p13.
基因ID	160364
基因名	CLEC12A
Swiss	Q5QGZ9
别名	CLEC12A;CD371;CLL-1;CLL1;DCAL-2;MICL

## 产品验证



Western blot analysis of CLEC12A expressed in K-562 using CLEC12A Rabbit pAb at 1:1000. Secondary antibody: HRP Goat Anti-Rabbit IgG (H+L) at 1:5000. Lysates/proteins: 30ug per lane. Blocking buffer: 5% non-fat dry milk in TBST. Detection: ECL Enhanced Kit. Exposure time: 120s.

## 实验步骤

访问官网浏览详情: [www.ablybio.cn](http://www.ablybio.cn)