

# TRIM21/SS-A Rabbit pAb

货号: **AYP25421**

## 产品信息

反应	Human,Mouse,Rat
宿主	Rabbit
克隆性	Polyclonal
预测反应	
应用	WB IHC IF/ICC
推荐浓度	<b>WB:</b> 1:500 - 1:2000 <b>IHC:</b> 1:50 - 1:200 <b>IF/ICC:</b> 1:50 - 1:200
理论分子量	45kDa/54kDa
实测分子量	54kDa
形式	Liquid
保存条件	Store at -20°C. Avoid freeze / thaw cycles. Buffer: PBS with 0.01% thiomersal,50% glycerol,pH7.3.
偶联物	Unconjugated
阳性对照	A-549
细胞定位	Cytoplasm,Cytoplasmic vesicle,Nucleus,P-body,autophagosome
纯化	Affinity purification

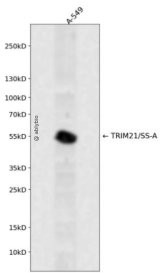
## 抗原信息

抗原信息	Recombinant fusion protein containing a sequence corresponding to amino acids 80-330 of human TRIM21/SS-A (NP_003132.2).
序列	SQEAREGTQGERCAVHGERLHLFCEKDGKALCWVCAQSRKHRDHAMVPLEEAAQEYQEKLQVALGELRRKQELAEKLEV EIAIKRADWKKTIVETQKSRIHAEFVQKNFLVEEEQRQLQELEKDEREQLRILGEKEAKLAQQSQALQELISELDRRCHSSA LELLQEVIIVLERSSESWNLKDLDTISPELRSVCHVPGLKKMLRITCAVHITLDPDTANPWLILSEDRRQVRLGDTQQSIPGNEE RFDSYPM

## 靶点信息

研究背景	This gene encodes a member of the tripartite motif (TRIM) family. The TRIM motif includes three zinc-binding domains, a RING, a B-box type 1 and a B-box type 2, and a coiled-coil region. The encoded protein is part of the RoSSA ribonucleoprotein, which includes a single polypeptide and one of four small RNA molecules. The RoSSA particle localizes to both the cytoplasm and the nucleus. RoSSA interacts with autoantigens in patients with Sjogren syndrome and systemic lupus erythematosus. Alternatively spliced transcript variants for this gene have been described but the full-length nature of only one has been determined.
基因ID	6737
基因名	TRIM21
Swiss	P19474
别名	TRIM21;RNF81;RO52;Ro/SSA;SSA;SSA1

## 产品验证



Western blot analysis of TRIM21/SS-A expressed in A-549 using TRIM21/SS-A Rabbit pAb at 1:1000. Secondary antibody: HRP Goat Anti-Rabbit IgG (H+L) at 1:5000. Lysates/proteins: 30ug per lane. Blocking buffer: 5% non-fat dry milk in TBST. Detection: ECL Enhanced Kit. Exposure time: 120s.

## 实验步骤

访问官网浏览详情: [www.ablybio.cn](http://www.ablybio.cn)