

# CLEC10A Rabbit pAb

货号: AYP25420

## 产品信息

反应	Human,Mouse
宿主	Rabbit
克隆性	Polyclonal
预测反应	
应用	WB
推荐浓度	<b>WB:</b> 1:500 - 1:2000
理论分子量	28kDa/32kDa/35kDa
实测分子量	38kDa
形式	Liquid
保存条件	Store at -20°C. Avoid freeze / thaw cycles. Buffer: PBS with 0.01% thiomersal,50% glycerol,pH7.3.
偶联物	Unconjugated
阳性对照	U-87MG,K-562,Raji,Mouse testis
细胞定位	Membrane,Single-pass type II membrane protein
纯化	Affinity purification

## 抗原信息

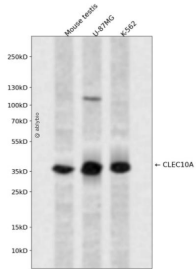
抗原信息	Recombinant fusion protein containing a sequence corresponding to amino acids 60-180 of human CLEC10A (NP_878910.1).
序列	FQNSKFQRDVLTLRDTSNFTSNTVAEIQALTSQGSSLEETIASLKAEEVGFQKQERQAGVSELQEHTTQKAHLGHCPHCPSVCVPVHSEMLLRVQQLVQDLKLLTCQVATLNNASTEGTC

## 靶点信息

研究背景	This gene encodes a member of the C-type lectin/C-type lectin-like domain (CTL/CTLD) superfamily. Members of this family share a common protein fold and have diverse functions, such as cell adhesion, cell-cell signaling, glycoprotein turnover, and roles in inflammation and immune response. The encoded type 2 transmembrane protein may function as a cell surface antigen. Two transcript variants encoding distinct isoforms have been identified for this gene.
基因ID	10462

基因名	CLEC10A
Swiss	Q8IU99
别名	CLEC10A;CD301;CLECSF13;CLECSF14;HML;HML2;MGL

## 产品验证



Western blot analysis of CLEC10A expressed in Mouse testis,U-87MG,K-562 using CLEC10A Rabbit pAb at 1:1000. Secondary antibody: HRP Goat Anti-Rabbit IgG (H+L) at 1:5000. Lysates/proteins: 30ug per lane. Blocking buffer: 5% non-fat dry milk in TBST. Detection: ECL Enhanced Kit. Exposure time: 120s.

## 实验步骤

访问官网浏览详情: [www.ablybio.cn](http://www.ablybio.cn)