

# TLR6 Rabbit pAb

货号: **AYP25418**

## 产品信息

反应	Human,Mouse
宿主	Rabbit
克隆性	Polyclonal
预测反应	
应用	WB IF/ICC
推荐浓度	<b>WB:</b> 1:500 - 1:1000 <b>IF/ICC:</b> 1:50 - 1:200
理论分子量	55kDa/91kDa
实测分子量	100KDa
形式	Liquid
保存条件	Store at -20°C. Avoid freeze / thaw cycles. Buffer: PBS with 0.05% proclin300,50% glycerol,pH7.3.
偶联物	Unconjugated
阳性对照	K-562,Raji,RAW264.7,Mouse thymus
细胞定位	Cell membrane,Cytoplasmic vesicle,Single-pass type I membrane protein,phagosome membrane
纯化	Affinity purification

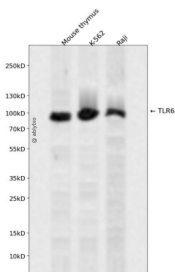
## 抗原信息

抗原信息	A synthetic peptide corresponding to a sequence within amino acids 697-796 of human TLR6 (NP_006059.2).
序列	KSIFVLSPNFVQSEWCHYELYFAHHNLFHEGSNNLILILLEPIPQNSIPNKYHKLKALMTQRTYLQWPKEKSKRGLFWANIRA AFNMKLTTLVTENNDVKS

## 靶点信息

研究背景	The protein encoded by this gene is a member of the Toll-like receptor (TLR) family which plays a fundamental role in pathogen recognition and activation of innate immunity. TLRs are highly conserved from <i>Drosophila</i> to humans and share structural and functional similarities. They recognize pathogen-associated molecular patterns (PAMPs) that are expressed on infectious agents, and mediate the production of cytokines necessary for the development of effective immunity. The various TLRs exhibit different patterns of expression. This receptor functionally interacts with toll-like receptor 2 to mediate cellular response to bacterial lipoproteins. A Ser249Pro polymorphism in the extracellular domain of the encoded protein may be associated with an increased of asthma in some populations.
基因ID	10333
基因名	TLR6
Swiss	Q9Y2C9
别名	TLR6;CD286

## 产品验证



Western blot analysis of TLR6 expressed in Mouse thymus, K-562, Raji using TLR6 Rabbit pAb at 1:1000. Secondary antibody: HRP Goat Anti-Rabbit IgG (H+L) at 1:5000. Lysates/proteins: 30ug per lane. Blocking buffer: 5% non-fat dry milk in TBST. Detection: ECL Enhanced Kit. Exposure time: 120s.

## 实验步骤

访问官网浏览详情: [www.ablybio.cn](http://www.ablybio.cn)