

TUBB8 Rabbit pAb

货号: **AYP25384**

产品信息

反应	Human
宿主	Rabbit
克隆性	Polyclonal
预测反应	
应用	WB IF/ICC
推荐浓度	WB: 1:500 - 1:1000 IF/ICC: 1:50 - 1:200
理论分子量	49kDa
实测分子量	55kDa
形式	Liquid
保存条件	Store at -20°C. Avoid freeze / thaw cycles. Buffer: PBS with 0.02% sodium azide, 50% glycerol, pH7.3.
偶联物	Unconjugated
阳性对照	LO2, Jurkat, HepG2, A-549
细胞定位	Cytoplasm, cytoskeleton
纯化	Affinity purification

抗原信息

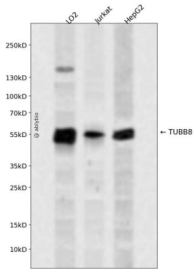
抗原信息	A synthetic peptide of human TUBB8
序列	

靶点信息

研究背景	The protein encoded by this gene represents the primary beta-tubulin subunit of oocytes and the early embryo. Defects in this gene, which is primate-specific, are a cause of oocyte maturation defect 2 and infertility.
基因ID	347688
基因名	TUBB8

Swiss	Q3ZCM7
别名	TUBB8;OOMD;OOMD2;bA631M21.2

产品验证



Western blot analysis of TUBB8 expressed in LO2, Jurkat, HepG2 using TUBB8 Rabbit pAb at 1:1000. Secondary antibody: HRP Goat Anti-Rabbit IgG (H+L) at 1:5000. Lysates/proteins: 30ug per lane. Blocking buffer: 5% non-fat dry milk in TBST. Detection: ECL Enhanced Kit. Exposure time: 120s.

实验步骤

访问官网浏览详情: www.ablybio.cn