

# CTCF Rabbit pAb

货号: **AYP25382**

## 产品信息

反应	Human,Mouse,Rat
宿主	Rabbit
克隆性	Polyclonal
预测反应	
应用	WB IHC IF/ICC IP ChIP
推荐浓度	<b>WB:</b> 1:1000 - 1:2000 <b>IHC:</b> 1:50 - 1:200 <b>IF/ICC:</b> 1:50 - 1:200 <b>IP:</b> 1:50 - 1:100 <b>ChIP:</b> 1:50 - 1:200
理论分子量	45kDa/82kDa
实测分子量	140kDa
形式	Liquid
保存条件	Store at -20°C. Avoid freeze / thaw cycles. Buffer: PBS with 0.01% thiomersal,50% glycerol,pH7.3.
偶联物	Unconjugated
阳性对照	293T
细胞定位	Chromosome,Nucleus,centromere,nucleoplasm
纯化	Affinity purification

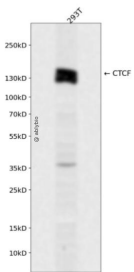
## 抗原信息

抗原信息	Recombinant fusion protein containing a sequence corresponding to amino acids 1-260 of human CTCF ( NP_006556.1).
序列	MEGDAVEAIVEESETFIK GKERTYQRRREGGQEEDACHLPQNQTDGGEVVDVNSSVQMVMMEQLDPTLLQMKTEVM EGTVAPEAEAAVDDTQIITLQVVNMEEQPINIGELQLVQVPVPTVPVATTSVEELQGAYENEVSKEGLAESEPMICHTLPLP EGFQVVKVGANGEVETLEQGELPPQEDPSWQKDPDYQPPAKKTKKTKSKLRYTEEGKDVDVSVYDFEEEQEGLLSEV NAEKVVGNMKPPKPTKIKKK

## 靶点信息

研究背景	This gene is a member of the BORIS + CTCF gene family and encodes a transcriptional regulator protein with 11 highly conserved zinc finger (ZF) domains. This nuclear protein is able to use different combinations of the ZF domains to bind different DNA target sequences and proteins. Depending upon the context of the site, the protein can bind a histone acetyltransferase (HAT)-containing complex and function as a transcriptional activator or bind a histone deacetylase (HDAC)-containing complex and function as a transcriptional repressor. If the protein is bound to a transcriptional insulator element, it can block communication between enhancers and upstream promoters, thereby regulating imprinted expression. Mutations in this gene have been associated with invasive breast cancers, prostate cancers, and Wilms' tumors. Alternatively spliced transcript variants encoding different isoforms have been found for this gene.
基因ID	10664
基因名	CTCF
Swiss	P49711
别名	CTCF;MRD21;CTCF

## 产品验证



Western blot analysis of CTCF expressed in 293T using CTCF Rabbit pAb at 1:1000. Secondary antibody: HRP Goat Anti-Rabbit IgG (H+L) at 1:5000. Lysates/proteins: 30ug per lane. Blocking buffer: 5% non-fat dry milk in TBST. Detection: ECL Enhanced Kit. Exposure time: 120s.

## 实验步骤

访问官网浏览详情: [www.ablybio.cn](http://www.ablybio.cn)