

EDIL3 Rabbit pAb

货号: **AYP25364**

产品信息

反应	Human,Mouse
宿主	Rabbit
克隆性	Polyclonal
预测反应	
应用	WB IF/ICC
推荐浓度	WB: 1:500 - 1:1000 IF/ICC: 1:50 - 1:200
理论分子量	52kDa/53kDa
实测分子量	52kDa
形式	Liquid
保存条件	Store at -20°C. Avoid freeze / thaw cycles. Buffer: PBS with 0.02% sodium azide,50% glycerol,pH7.3.
偶联物	Unconjugated
阳性对照	Mouse lung,Mouse brain
细胞定位	Secreted
纯化	Affinity purification

抗原信息

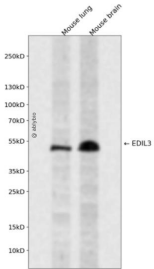
抗原信息	A synthetic peptide corresponding to a sequence within amino acids 350-450 of human EDIL3 (NP_005702.3).
序列	TWEPKARLDKQGKVNAWTSGHNDQSQWLQVDLLVPTKVTGIITQGAKDFGHVQFVGSYKLAYSNDGEHWTVYQDEKQRKDKVFQGNFDNDTHRKNVIDPP

靶点信息

研究背景	The protein encoded by this gene is an integrin ligand. It plays an important role in mediating angiogenesis and may be important in vessel wall remodeling and development. It also influences endothelial cell behavior.
基因ID	10085

基因名	EDIL3
Swiss	O43854
别名	EDIL3;DEL1

产品验证



Western blot analysis of EDIL3 expressed in Mouse lung, Mouse brain using EDIL3 Rabbit pAb at 1:1000. Secondary antibody: HRP Goat Anti-Rabbit IgG (H+L) at 1:5000. Lysates/proteins: 30ug per lane. Blocking buffer: 5% non-fat dry milk in TBST. Detection: ECL Enhanced Kit. Exposure time: 120s.

实验步骤

访问官网浏览详情: www.ablybio.cn