

Musashi-1 (MSI1) Rabbit pAb

货号: AYP25356

产品信息

反应	Human,Mouse,Rat
宿主	Rabbit
克隆性	Polyclonal
预测反应	
应用	WB IHC
推荐浓度	WB: 1:500 - 1:1000 IHC: 1:50 - 1:100
理论分子量	39kDa
实测分子量	42kDa
形式	Liquid
保存条件	Store at -20°C. Avoid freeze / thaw cycles. Buffer: PBS with 0.01% thiomersal,50% glycerol,pH7.3.
偶联物	Unconjugated
阳性对照	SH-SY5Y,293T,Mouse brain
细胞定位	Cytoplasm,Nucleus
纯化	Affinity purification

抗原信息

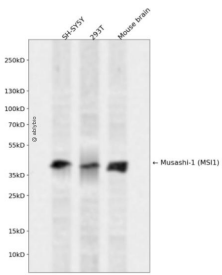
抗原信息	Recombinant fusion protein containing a sequence corresponding to amino acids 200-362 of human Musashi-1 (MSI1) (NP_002433.1).
序列	SRVMPYGMDFMLGIGMLGYPGFQATTYASRSYTGAPGYTYQFPEFRVERTPLPSAPVLPeltaIPLTAYGPMAAAAAAAAAVVVRGTGSHPWMTMAPPPGSTPSRTGGFLGTTSPGPMAELYGAANQDSGVSSYISAASPSTGFGHSLGGPLIATAFTNGYH

靶点信息

研究背景	This gene encodes a protein containing two conserved tandem RNA recognition motifs. Similar proteins in other species function as RNA-binding proteins and play central roles in posttranscriptional gene regulation. Expression of this gene has been correlated with the grade of the malignancy and proliferative activity in gliomas and melanomas. A pseudogene for this gene is located on chromosome 11q13.
------	--

基因ID	4440
基因名	MSI1
Swiss	O43347
别名	MSI1

产品验证



Western blot analysis of Musashi-1 (MSI1) expressed in SH-SY5Y, 293T, Mouse brain using Musashi-1 (MSI1) Rabbit pAb at 1:1000. Secondary antibody: HRP Goat Anti-Rabbit IgG (H+L) at 1:5000. Lysates/proteins: 30ug per lane. Blocking buffer: 5% non-fat dry milk in TBST. Detection: ECL Enhanced Kit. Exposure time: 120s.

实验步骤

访问官网浏览详情: www.ablybio.cn