

STAU2 Rabbit pAb

货号: **AYP25352**

产品信息

反应	Human,Mouse,Rat
宿主	Rabbit
克隆性	Polyclonal
预测反应	
应用	WB IF/ICC
推荐浓度	WB: 1:500 - 1:2000 IF/ICC: 1:50 - 1:200
理论分子量	11kDa/34kDa/43kDa/52kDa/55kDa/59kDa/62kDa
实测分子量	52kDa
形式	Liquid
保存条件	Store at -20°C. Avoid freeze / thaw cycles. Buffer: PBS with 0.02% sodium azide,50% glycerol,pH7.3.
偶联物	Unconjugated
阳性对照	Mouse heart,Mouse kidney,Rat heart,Rat brain
细胞定位	Cytoplasm,Endoplasmic reticulum,Nucleus,nucleolus
纯化	Affinity purification

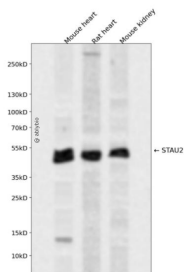
抗原信息

抗原信息	A synthetic peptide corresponding to a sequence within amino acids 300-400 of human STAU2 (NP_001157852.1).
序列	PEYGQGMNPISRLAQIQAKKEPEPDYVLLSERGMPPRRREFVMQVKVGNEVATGTGPNKKIAKKNAAEAMLLQLGYKASTNLQDQLEKTGENKGWSGPKPG

靶点信息

研究背景	Staufen homolog 2 is a member of the family of double-stranded RNA (dsRNA)-binding proteins involved in the transport and/or localization of mRNAs to different subcellular compartments and/or organelles. These proteins are characterized by the presence of multiple dsRNA-binding domains which are required to bind RNAs having double-stranded secondary structures. Staufen homolog 2 shares 48.5% and 59.9% similarity with drosophila and human staufen, respectively. The exact function of Staufen homolog 2 is not known, but since it contains 3 copies of conserved dsRNA binding domain, it could be involved in double-stranded RNA binding events. Several transcript variants encoding different isoforms have been found for this gene.
基因ID	27067
基因名	STAU2
Swiss	Q9NUL3
别名	STAU2;39K2;39K3

产品验证



Western blot analysis of STAU2 expressed in Mouse heart, Rat heart, Mouse kidney using STAU2 Rabbit p Ab at 1:1000. Secondary antibody: HRP Goat Anti-Rabbit IgG (H+L) at 1:5000. Lysates/proteins: 30ug per lane. Blocking buffer: 5% non-fat dry milk in TBST. Detection: ECL Enhanced Kit. Exposure time: 120s

实验步骤

访问官网浏览详情: www.ablybio.cn