

— ABLYBIO, Help Your Research



FXR2 Rabbit pAb

货号: **AYP25351**

产品信息

反应	Human,Mouse
宿主	Rabbit
克隆性	Polyclonal
预测反应	
应用	WB IF/ICC
推荐浓度	WB: 1:500 - 1:2000 IF/ICC: 1:50 - 1:200
理论分子量	74kDa
实测分子量	104kDa
形式	Liquid
保存条件	Store at -20°C. Avoid freeze / thaw cycles. Buffer: PBS with 0.02% sodium azide,50% glycerol,pH7.3.
偶联物	Unconjugated
阳性对照	HeLa,MCF7,U-251MG,Mouse liver,Mouse heart
细胞定位	Cytoplasm
纯化	Affinity purification

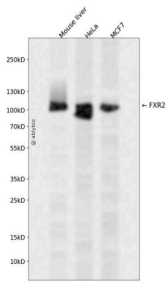
抗原信息

抗原信息	A synthetic peptide corresponding to a sequence within amino acids 550-650 of human FXR2 (NP_004851.2).
------	---

靶点信息

研究背景	The protein encoded by this gene is a RNA binding protein containing two KH domains and one RCG box, which is similar to FMRP and FXR1. It associates with polyribosomes, predominantly with 60S large ribosomal subunits. This encoded protein may self-associate or interact with FMRP and FXR1. It may have a role in the development of fragile X mental retardation syndrome.
基因ID	9513
基因名	FXR2
Swiss	P51116 (https://www.uniprot.org/uniprotkb/P51116/entry)
别名	FXR2,FMR1L2,FXR2P,FXR2 Rabbit pAb,FMR1 autosomal homolog 2

产品验证



Western blot analysis of FXR2 expressed in Mouse liver, HeLa, MCF7 using FXR2 Rabbit pAb at 1:1000. Secondary antibody: HRP Goat Anti-Rabbit IgG (H+L) at 1:5000. Lysates/proteins: 30ug per lane. Blocking buffer: 5% non-fat dry milk in TBST. Detection: ECL Enhanced Kit. Exposure time: 120s.

实验步骤

访问官网浏览详情: www.ablybio.cn (<https://www.ablybio.cn/www.ablybio.cn>)