

GFM1 Rabbit pAb

货号: **AYP25347**

产品信息

反应	Human,Mouse,Rat
宿主	Rabbit
克隆性	Polyclonal
预测反应	
应用	WB IHC
推荐浓度	WB: 1:500 - 1:2000 IHC: 1:50 - 1:200
理论分子量	83kDa/85kDa
实测分子量	83kDa/85kDa
形式	Liquid
保存条件	Store at -20°C. Avoid freeze / thaw cycles. Buffer: PBS with 0.02% sodium azide,50% glycerol,pH7.3.
偶联物	Unconjugated
阳性对照	mouse kidney tissue, HeLa cells, human heart tissue
细胞定位	Mitochondrion
纯化	Affinity purification

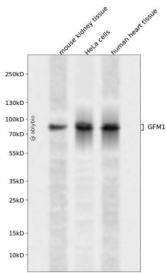
抗原信息

抗原信息	Recombinant fusion protein containing a sequence corresponding to amino acids 482-751 of human GFM 1 (NP_079272.4).
序列	VYFDTENKETVISGMGELHLEIYAQRLERREYGCPCITGKPKVAFRETITAPVPFDFTHKKQSGGAGQYGKVGIVLEPLDPEDY TKLEFSDETFGSNIPKQFVPAVEKGFLDACEKGPLSGHKL SGLRFVLQDGAHMHMVD SNEISFIRAGEGALKQALANATLCIL EPIMAVEVVAPNEFQGQVIAGINRRRHGVITGQDGVEDYFTLYADVPLNDMFGYSTE LRSCTEGKGEYTMESRYQPCLPST QEDVINKYLEATGQLPVKKGKAKN

靶点信息

研究背景	Eukaryotes contain two protein translational systems, one in the cytoplasm and one in the mitochondria. Mitochondrial translation is crucial for maintaining mitochondrial function and mutations in this system lead to a breakdown in the respiratory chain-oxidative phosphorylation system and to impaired maintenance of mitochondrial DNA. This gene encodes one of the mitochondrial translation elongation factors. Its role in the regulation of normal mitochondrial function and in different disease states attributed to mitochondrial dysfunction is not known.
基因ID	85476
基因名	GFM1
Swiss	Q96RP9
别名	GFM1;COXPD1;EFG;EFG1;EFGM;EGF1;GFM;hEFG1

产品验证



Western blot analysis of GFM1 expressed in mouse kidney tissue, HeLa cells, human heart tissue using GFM1 Rabbit pAb at 1:1000. Secondary antibody: HRP Goat Anti-Rabbit IgG (H+L) at 1:5000. Lysates/proteins: 30ug per lane. Blocking buffer: 5% non-fat dry milk in TBST. Detection: ECL Enhanced Kit. Exposure time: 120s.

实验步骤

访问官网浏览详情: www.ablybio.cn