

# ELAVL2 Rabbit pAb

货号: **AYP25343**

## 产品信息

反应	Human,Mouse,Rat
宿主	Rabbit
克隆性	Polyclonal
预测反应	
应用	WB IHC
推荐浓度	<b>WB:</b> 1:1000 - 1:2000 <b>IHC:</b> 1:50 - 1:200
理论分子量	38kDa/39kDa
实测分子量	44kDa
形式	Liquid
保存条件	Store at -20°C. Avoid freeze / thaw cycles. Buffer: PBS with 0.02% sodium azide,50% glycerol,pH7.3.
偶联物	Unconjugated
阳性对照	SH-SY5Y,Mouse spinal cord
细胞定位	nucleoplasm
纯化	Affinity purification

## 抗原信息

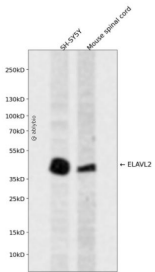
抗原信息	A synthetic peptide corresponding to a sequence within amino acids 1-100 of human ELAVL2 (NP_004423 .2).
序列	METQLSNGPTCNNTANGPTTINNCSPPVDSGNTEDSKTNLIVNYLPQNMTQEELKSLFGSIGEIESCKLVRDKITGQSLG YGFVNYIDPKDAEKAINTL

## 靶点信息

研究背景	The protein encoded by this gene is a neural-specific RNA-binding protein that is known to bind to several 3' UTRs, including its own and also that of FOS and ID. The encoded protein may recognize a GAAA motif in the RNA. Three transcript variants encoding two different isoforms have been found for this gene.
基因ID	1993

基因名	ELAVL2
Swiss	Q12926
别名	ELAVL2;HEL-N1;HELN1;HUB

## 产品验证



Western blot analysis of ELAVL2 expressed in SH-SY5Y, Mouse spinal cord using ELAVL2 Rabbit pAb at 1:1000. Secondary antibody: HRP Goat Anti-Rabbit IgG (H+L) at 1:5000. Lysates/proteins: 30ug per lane. Blocking buffer: 5% non-fat dry milk in TBST. Detection: ECL Enhanced Kit. Exposure time: 120s.

## 实验步骤

访问官网浏览详情: [www.ablybio.cn](http://www.ablybio.cn)