

# BCS1L Rabbit pAb

货号: **AYP25337**

## 产品信息

反应	Human,Mouse,Rat
宿主	Rabbit
克隆性	Polyclonal
预测反应	
应用	WB IHC IF/ICC
推荐浓度	<b>WB:</b> 1:500 - 1:2000 <b>IHC:</b> 1:50 - 1:200 <b>IF/ICC:</b> 1:50 - 1:200
理论分子量	47kDa
实测分子量	48kDa
形式	Liquid
保存条件	Store at -20°C. Avoid freeze / thaw cycles. Buffer: PBS with 0.02% sodium azide,50% glycerol,pH7.3.
偶联物	Unconjugated
阳性对照	HepG2,SKOV3,MCF7,HeLa,Mouse heart,Mouse liver
细胞定位	Mitochondrion inner membrane,Single-pass membrane protein
纯化	Affinity purification

## 抗原信息

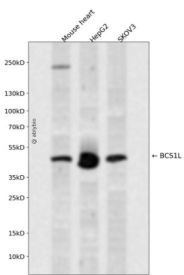
抗原信息	Recombinant fusion protein containing a sequence corresponding to amino acids 33-240 of human BCS1L (NP_004319.1).
序列	RKGVQLGLVAFRRHYMITLEVPARDRSYAWLLSWLTRHSTRTQHLSVETSYLQHESGRISTKFEFVPSPGNHFIWYRGKWI RVERREMQMIDLQTGTPWESVTFTALGTDKRVFFNILEEARELALQEEGKTVMYTAGVSEWRPFGYPRRRRPLNSVVL QQGLADRIVRDVQEFIDNPKWYTRGIPYRRGYLLYGGPGCGKSSFI

## 靶点信息

研究背景	This gene encodes a homolog of the <i>S. cerevisiae</i> bcs1 protein which is involved in the assembly of complex III of the mitochondrial respiratory chain. The encoded protein does not contain a mitochondrial targeting sequence but experimental studies confirm that it is imported into mitochondria. Mutations in this gene are associated with mitochondrial complex III deficiency and the GRACILE syndrome. Several alternatively spliced transcripts encoding two different isoforms have been described.
------	--

基因ID	617
基因名	BCS1L
Swiss	Q9Y276
别名	BCS1L;BCS;BCS1;BJS;FLNMS;GRACILE;Hs.6719;MC3DN1;PTD;h-BCS;h-BCS1

### 产品验证



Western blot analysis of BCS1L expressed in Mouse heart, HepG2, SKOV3 using BCS1L Rabbit pAb at 1:1000. Secondary antibody: HRP Goat Anti-Rabbit IgG (H+L) at 1:5000. Lysates/proteins: 30ug per lane. Blocking buffer: 5% non-fat dry milk in TBST. Detection: ECL Enhanced Kit. Exposure time: 120s.

### 实验步骤

访问官网浏览详情: [www.ablybio.cn](http://www.ablybio.cn)