

KRT6B Rabbit pAb

货号: **AYP25335**

产品信息

反应	Human,Mouse
宿主	Rabbit
克隆性	Polyclonal
预测反应	
应用	WB
推荐浓度	WB: 1:500 - 1:2000
理论分子量	60kDa
实测分子量	60kDa
形式	Liquid
保存条件	Store at -20°C. Avoid freeze / thaw cycles. Buffer: PBS with 0.02% sodium azide,50% glycerol,pH7.3.
偶联物	Unconjugated
阳性对照	Mouse eye
细胞定位	cytosol,extracellular exosome
纯化	Affinity purification

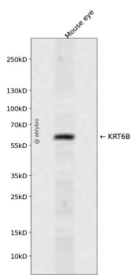
抗原信息

抗原信息	Recombinant fusion protein containing a sequence corresponding to amino acids 1-280 of human KRT6B (NP_005546.2).
序列	MASTTTIRSHSSRRGFSANSARLPGVSRSGFSSISVSRSRGSGGLGGACGGAGFGSRSLYLGGSKRISIGGGSCAIS GGYGSRAGGSYFGGAGSGFGGGAGIGFGLGGGAGLAGGFGGPGFPVCPGGIQEVTVNQSLTPLNLQIDPAIQRV RAEEREQIKTLNKNKFAFIDKVRFLQQNKVLDTKWTLLEQGTKTVRQNLEPLFEQYINNLRQLDNIVGERGRLDSELRN MQDLVEDLKNKYEDEINKRTAAENEFVTLKKDVAAYMN

靶点信息

研究背景	The protein encoded by this gene is a member of the keratin gene family. The type II cytokeratins consist of basic or neutral proteins which are arranged in pairs of heterotypic keratin chains coexpressed during differentiation of simple and stratified epithelial tissues. As many as six of this type II cytokeratin (KRT6) have been identified; the multiplicity of the genes is attributed to successive gene duplication events. The genes are expressed with family members KRT16 and/or KRT17 in the filiform papillae of the tongue, the stratified epithelial lining of oral mucosa and esophagus, the outer root sheath of hair follicles, and the glandular epithelia. Mutations in these genes have been associated with pachyonychia congenita. The type II cytokeratins are clustered in a region of chromosome 12q12-q13.
基因ID	3854
基因名	KRT6B
Swiss	P04259
别名	KRT6B;CK-6B;CK6B;K6B;KRTL1;PC2;PC4

产品验证



Western blot analysis of KRT6B expressed in Mouse eye using KRT6B Rabbit pAb at 1:1000. Secondary antibody: HRP Goat Anti-Rabbit IgG (H+L) at 1:5000. Lysates/proteins: 30ug per lane. Blocking buffer: 5% non-fat dry milk in TBST. Detection: ECL Enhanced Kit. Exposure time: 120s.

实验步骤

访问官网浏览详情: www.ablybio.cn