

MLH3 Rabbit pAb

货号: AYP25325

产品信息

反应	Human
宿主	Rabbit
克隆性	Polyclonal
预测反应	
应用	WB
推荐浓度	WB: 1:500 - 1:2000
理论分子量	161kDa/163kDa
实测分子量	164KDa
形式	Liquid
保存条件	Store at -20°C. Avoid freeze / thaw cycles. Buffer: PBS with 0.02% sodium azide,50% glycerol,pH7.3.
偶联物	Unconjugated
阳性对照	HCT116
细胞定位	Nucleus
纯化	Affinity purification

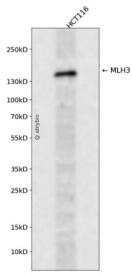
抗原信息

抗原信息	Recombinant fusion protein containing a sequence corresponding to amino acids 1180-1429 of human MLH3 (NP_055196.2).
序列	RFTKGMIHSMQVLQQVDNKFIACLMSTKTEENGEADSYEKQQAQGSGRKKLLSSTLIPPLEITVTEEQRLLWCYHKNLED LGLFVFPDTSDSLVLVGKVPLCFVEREANELRRGRSTVTKSIVEEFIREQLELLQTTGGIQGTLPLTVQKVLASQACHGAIK FNDGLSLQESCRLEALSSQLPFQCAHGRPSMLPLADIDHLEQEKQIKPNLTKLRKMAQAWRLFGKAECDTRQSLQQSM PPCEPP

靶点信息

研究背景	This gene is a member of the MutL-homolog (MLH) family of DNA mismatch repair (MMR) genes. MLH genes are implicated in maintaining genomic integrity during DNA replication and after meiotic recombination. The protein encoded by this gene functions as a heterodimer with other family members. Somatic mutations in this gene frequently occur in tumors exhibiting microsatellite instability, and germline mutations have been linked to hereditary nonpolyposis colorectal cancer type 7 (HNPCC7). Several alternatively spliced transcript variants have been identified, but the full-length nature of only two transcript variants has been determined.
基因ID	27030
基因名	MLH3
Swiss	Q9UHC1
别名	MLH3;HNPCC7

产品验证



Western blot analysis of MLH3 expressed in HCT116 using MLH3 Rabbit pAb at 1:1000. Secondary antibody: HRP Goat Anti-Rabbit IgG (H+L) at 1:5000. Lysates/proteins: 30ug per lane. Blocking buffer: 5% non-fat dry milk in TBST. Detection: ECL Enhanced Kit. Exposure time: 120s.

实验步骤

访问官网浏览详情: www.ablybio.cn