

EIF2B1 Rabbit pAb

货号: AYP25320

产品信息

反应	Human,Mouse
宿主	Rabbit
克隆性	Polyclonal
预测反应	
应用	WB IF/ICC
推荐浓度	WB: 1:500 - 1:2000 IF/ICC: 1:50 - 1:200
理论分子量	24kDa/33kDa
实测分子量	34kDa
形式	Liquid
保存条件	Store at -20°C. Avoid freeze / thaw cycles. Buffer: PBS with 0.02% sodium azide,50% glycerol,pH7.3.
偶联物	Unconjugated
阳性对照	SH-SY5Y,MCF7,SKOV3,NCI-H460,Mouse liver,Mouse brain
细胞定位	cytoplasm,cytosol,eukaryotic translation initiation factor 2B complex,plasma membrane
纯化	Affinity purification

抗原信息

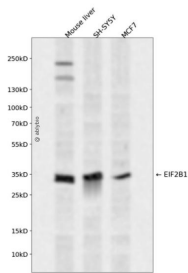
抗原信息	Recombinant fusion protein containing a sequence corresponding to amino acids 1-305 of human EIF2B1 (NP_001405.1).
序列	MDDKELIEYFKSQMKEDPDMASAVAAIRTLLEFLKRDKGETIQGLRANLTSAIETLCGVDSSVAVSSGGELFLRFISLASLEYSDYSKCKKIMIERGELFLRRISLSRNKIADLCHTFIKDGATILTHAYSRVLRVLEAAVAACKRFSVYVTESQPDLSGKKMAKALCHLNVPVTVVLDAAVGYIMEKADLVIVGAEGVVENGIIINKIGTNQMAVCAKAQNKPFYVVAESFKFVRLFPLNQDVPDKFKYKADTLKVAQTGQDLKEEHPWVDYAPSLITLLFTDLGVLTPSAVSDELIKLYL

靶点信息

研究背景	This gene encodes one of five subunits of eukaryotic translation initiation factor 2B (EIF2B), a GTP exchange factor for eukaryotic initiation factor 2 and an essential regulator for protein synthesis. Mutations in this gene and the genes encoding other EIF2B subunits have been associated with leukoencephalopathy with vanishing white matter.
------	---

基因ID	1967
基因名	EIF2B1
Swiss	Q14232
别名	EIF2B1;EIF2B;EIF2BA

产品验证



Western blot analysis of EIF2B1 expressed in Mouse liver,SH-SY5Y,MCF7 using EIF2B1 Rabbit pAb at 1:1 000. Secondary antibody: HRP Goat Anti-Rabbit IgG (H+L) at 1:5000. Lysates/proteins: 30ug per lane. Blocking buffer: 5% non-fat dry milk in TBST. Detection: ECL Enhanced Kit. Exposure time: 120s.

实验步骤

访问官网浏览详情: www.ablybio.cn