

TFE3 Rabbit pAb

货号: **AYP25315**

产品信息

反应	Human,Mouse,Rat
宿主	Rabbit
克隆性	Polyclonal
预测反应	
应用	WB
推荐浓度	WB: 1:100 - 1:500
理论分子量	11kDa/61kDa
实测分子量	75KDa
形式	Liquid
保存条件	Store at -20°C. Avoid freeze / thaw cycles. Buffer: PBS with 0.02% sodium azide,50% glycerol,pH7.3.
偶联物	Unconjugated
阳性对照	HeLa,U2OS,NIH/3T3,C6
细胞定位	Nucleus
纯化	Affinity purification

抗原信息

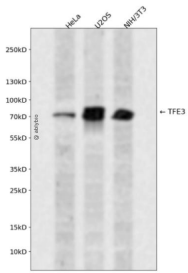
抗原信息	Recombinant fusion protein containing a sequence corresponding to amino acids 1-160 of human TFE3 (N P_006512.2).
序列	MSHAAEPARDGVEASAEGPRAVFVLLLEERRPADSAQLLSLNSLLPESGIVADIELENVLDPDSFYELKSQPLPLRSSLPLISLQ ATPATPATLSASSSAGGSRTMSSSSSRVLLRQQLMRAQAQEQERRERREQAAAAPFPSPAPASPAISVVGVSAG

靶点信息

研究背景	This gene encodes a basic helix-loop-helix domain-containing transcription factor that binds MUE3-type E-box sequences in the promoter of genes. The encoded protein promotes the expression of genes downstream of transforming growth factor beta (TGF-beta) signaling. This gene may be involved in chromosomal translocations in renal cell carcinomas and other cancers, resulting in the production of fusion proteins. Translocation partners include PRCC (papillary renal cell carcinoma), NONO (non-POU domain containing, octamer-binding), and ASPSCR1 (alveolar soft part sarcoma chromosome region, candidate 1), among other genes. Alternative splicing results in multiple transcript variants.
------	--

基因ID	7030
基因名	TFE3
Swiss	P19532
别名	TFE3;RCCP2;RCCX1;TFEA;bHLHe33

产品验证



Western blot analysis of TFE3 expressed in HeLa,U2OS,NIH/3T3 using TFE3 Rabbit pAb at 1:1000. Secondary antibody: HRP Goat Anti-Rabbit IgG (H+L) at 1:5000. Lysates/proteins: 30ug per lane. Blocking buffer: 5% non-fat dry milk in TBST. Detection: ECL Enhanced Kit. Exposure time: 120s.

实验步骤

访问官网浏览详情: www.ablybio.cn