

# MAGEA6 Rabbit pAb

货号: AYP25308

## 产品信息

反应	Human,Mouse
宿主	Rabbit
克隆性	Polyclonal
预测反应	
应用	WB IF/ICC
推荐浓度	<b>WB:</b> 1:500 - 1:2000 <b>IF/ICC:</b> 1:50 - 1:200
理论分子量	34kDa
实测分子量	35kDa
形式	Liquid
保存条件	Store at -20°C. Avoid freeze / thaw cycles. Buffer: PBS with 0.02% sodium azide,50% glycerol,pH7.3.
偶联物	Unconjugated
阳性对照	22Rv1,Mouse heart
细胞定位	nucleus
纯化	Affinity purification

## 抗原信息

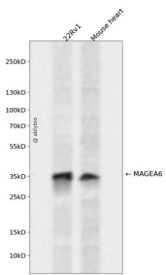
抗原信息	Recombinant fusion protein containing a sequence corresponding to amino acids 75-314 of human MAGE A6 (NP_005354.1).
序列	MNYPLWSQSYEDSSNQEEEGPSTFPDLESEFQAALSRKVAKLVHFLLLKYRAREPVTKAEMLGSVVGNWQYFFPVIFSKA SDSLQLVFGIELMEVDPIGHVYIFATCLGLSYDGLLGDNQIMPKTGFLIILAIIAKEGDCAPEEKIWEELSVLEVFEGREDSIFG DPKLLTQYFVQENYLEYRQVPGSDPACYEFLWGPRALIETSYVKVLHHMVKISGGPRISYPLLHEWALREGEE

## 靶点信息

研究背景	This gene is a member of the MAGEA gene family. The members of this family encode proteins with 50 to 80% sequence identity to each other. The promoters and first exons of the MAGEA genes show considerable variability, suggesting that the existence of this gene family enables the same function to be expressed under different transcriptional controls. The MAGEA genes are clustered at chromosomal location Xq28. They have been implicated in some hereditary disorders, such as dyskeratosis congenita. Alternative splicing results in multiple transcript variants.
------	--

基因ID	4105
基因名	MAGEA6
Swiss	P43360
别名	MAGEA6;CT1.6;MAGE-3b;MAGE3B;MAGE6

### 产品验证



Western blot analysis of MAGEA6 expressed in 22Rv1, Mouse heart using MAGEA6 Rabbit pAb at 1:1000. Secondary antibody: HRP Goat Anti-Rabbit IgG (H+L) at 1:5000. Lysates/proteins: 30ug per lane. Blocking buffer: 5% non-fat dry milk in TBST. Detection: ECL Enhanced Kit. Exposure time: 120s.

### 实验步骤

访问官网浏览详情: [www.ablybio.cn](http://www.ablybio.cn)