

HS1BP3 Rabbit pAb

货号: **AYP25293**

产品信息

反应	Human,Mouse,Rat
宿主	Rabbit
克隆性	Polyclonal
预测反应	
应用	WB
推荐浓度	WB: 1:500 - 1:2000
理论分子量	42kDa
实测分子量	55kDa
形式	Liquid
保存条件	Store at -20°C. Avoid freeze / thaw cycles. Buffer: PBS with 0.02% sodium azide,50% glycerol,pH7.3.
偶联物	Unconjugated
阳性对照	HepG2,Mouse liver,Mouse kidney,Mouse heart,Rat liver
细胞定位	endoplasmic reticulum,mitochondrion
纯化	Affinity purification

抗原信息

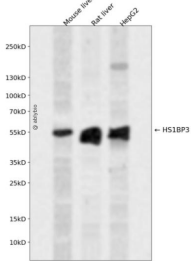
抗原信息	Recombinant fusion protein containing a sequence corresponding to amino acids 1-200 of human HS1BP3 (NP_071905.3).
序列	MQSPAVLVTSRRLQNAHTGLDLTVPQHVEVRGKMMMSGHVEYQILVVTRLAAFKSAKHRPEDVVQFLVSKKYSEIEEFYQK LSSRYAAASLPPLPRKVLVFGESDIRERRAVFNEILRCVSKDAELAGSPELLEFLGTRSPGAAGLTSRDSSVLDGTDSQTGN DEEAFDFFEQDQVAEEGPPVQSLKGEDAEESELEEEEA

靶点信息

研究背景	The protein encoded by this gene shares similarity with mouse Hs1bp3, an Hcls1/Hs1-interacting protein that may be involved in lymphocyte activation.
基因ID	64342

基因名	HS1BP3
Swiss	Q53T59
别名	HS1BP3;ETM2;HS1-BP3

产品验证



Western blot analysis of HS1BP3 expressed in Mouse liver, Rat liver, HepG2 using HS1BP3 Rabbit pAb at 1:1000. Secondary antibody: HRP Goat Anti-Rabbit IgG (H+L) at 1:5000. Lysates/proteins: 30ug per lane. Blocking buffer: 5% non-fat dry milk in TBST. Detection: ECL Enhanced Kit. Exposure time: 120s.

实验步骤

访问官网浏览详情: www.ablybio.cn