

# PDGFD Rabbit pAb

货号: **AYP25291**

## 产品信息

反应	Human,Mouse
宿主	Rabbit
克隆性	Polyclonal
预测反应	
应用	WB
推荐浓度	<b>WB:</b> 1:500 - 1:2000
理论分子量	42kDa
实测分子量	43kDa
形式	Liquid
保存条件	Store at -20°C. Avoid freeze / thaw cycles. Buffer: PBS with 0.05% proclin300,50% glycerol,pH7.3.
偶联物	Unconjugated
阳性对照	A-549,THP-1,Mouse kidney,Mouse heart
细胞定位	Secreted
纯化	Affinity purification

## 抗原信息

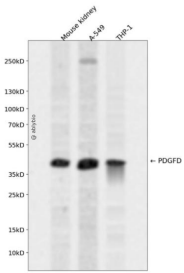
抗原信息	A synthetic peptide corresponding to a sequence within amino acids 250-350 of human PDGFD (NP_079484.1).
序列	SYHDRKSKVDLDRNLNDDAKRYSCTPRNYSVNIREELKLANVVFPRCLLVQRCGGNCGCGTVNWRSCCNSGKTVKKYH EVLQFEPGHIKRRGRAKTMALV

## 靶点信息

研究背景	The protein encoded by this gene is a member of the platelet-derived growth factor family. The four members of this family are mitogenic factors for cells of mesenchymal origin and are characterized by a core motif of eight cysteines, seven of which are found in this factor. This gene product only forms homodimers and, therefore, does not dimerize with the other three family members. It differs from alpha and beta members of this family in having an unusual N-terminal domain, the CUB domain. Two splice variants have been identified for this gene.
------	--------------------------------------------------------------------------------------------------------------------------------------------------------------------------------------------------------------------------------------------------------------------------------------------------------------------------------------------------------------------------------------------------------------------------------------------------------------------------------------------------------------------------------------------------------------------------

基因ID	80310
基因名	PDGFD
Swiss	Q9GZP0
别名	PDGFD;IEGF;MSTP036;SCDGF-B;SCDGFB

## 产品验证



Western blot analysis of PDGFD expressed in Mouse kidney,A-549,THP-1 using PDGFD Rabbit pAb at 1:1 000. Secondary antibody: HRP Goat Anti-Rabbit IgG (H+L) at 1:5000. Lysates/proteins: 30ug per lane. B locking buffer: 5% non-fat dry milk in TBST. Detection: ECL Enhanced Kit. Exposure time: 120s.

## 实验步骤

访问官网浏览详情: [www.ablybio.cn](http://www.ablybio.cn)