

LLGL2 Rabbit pAb

货号: **AYP25289**

产品信息

反应	Human,Mouse,Rat
宿主	Rabbit
克隆性	Polyclonal
预测反应	
应用	WB IF/ICC
推荐浓度	WB: 1:500 - 1:2000 IF/ICC: 1:50 - 1:200
理论分子量	114kDa
实测分子量	113kDa
形式	Liquid
保存条件	Store at -20°C. Avoid freeze / thaw cycles. Buffer: PBS with 0.02% sodium azide,50% glycerol,pH7.3.
偶联物	Unconjugated
阳性对照	MCF7,Mouse liver,Rat liver
细胞定位	Cytoplasm
纯化	Affinity purification

抗原信息

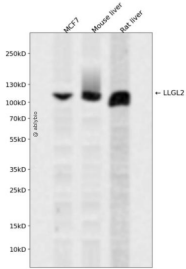
抗原信息	Recombinant fusion protein containing a sequence corresponding to amino acids 620-819 of mouse LLGL 2 (NP_663413.2).
序列	RQVFKCTLHPSDQLALEGPLSRVKSLKSLRQSFRRMRRSRVSSHKRRPGGPTGEAQAQAVNIKAERTGLQNMELAPV QRKIEARSAEDSFTGFVRTLYFADTYLRDSSRHCP SLWAGTNGGTVYAFSLRVPPAERRTDEPVRAEQAKEIQLMHRAPVV GILVLDGHNVPLPEPLEVAHDLSKSPDMQGS HQLLV VSEE

靶点信息

研究背景	The lethal (2) giant larvae protein of Drosophila plays a role in asymmetric cell division, epithelial cell polarity, and cell migration. This human gene encodes a protein similar to lethal (2) giant larvae of Drosophila. In fly, the protein's ability to localize cell fate determinants is regulated by the atypical protein kinase C (aPKC). In human, this protein interacts with aPKC-containing complexes and is cortically localized in mitotic cells. Alternative splicing results in multiple transcript variants encoding different isoforms.
------	--

基因ID	217325
基因名	
Swiss	
别名	LLGL2;HGL;Hugl-2;LGL2

产品验证



Western blot analysis of LLGL2 expressed in MCF7, Mouse liver, Rat liver using LLGL2 Rabbit pAb at 1:1000. Secondary antibody: HRP Goat Anti-Rabbit IgG (H+L) at 1:5000. Lysates/proteins: 30ug per lane. Blocking buffer: 5% non-fat dry milk in TBST. Detection: ECL Enhanced Kit. Exposure time: 120s.

实验步骤

访问官网浏览详情: www.ablybio.cn