

SHC4 Rabbit pAb

货号: **AYP25288**

产品信息

反应	Human,Mouse
宿主	Rabbit
克隆性	Polyclonal
预测反应	
应用	WB IF/ICC
推荐浓度	WB: 1:500 - 1:2000 IF/ICC: 1:50 - 1:200
理论分子量	42kDa/68kDa
实测分子量	42kDa/68kDa
形式	Liquid
保存条件	Store at -20°C. Avoid freeze / thaw cycles. Buffer: PBS with 0.02% sodium azide,50% glycerol,pH7.3.
偶联物	Unconjugated
阳性对照	
细胞定位	Cell junction,postsynaptic cell membrane,synapse
纯化	Affinity purification

抗原信息

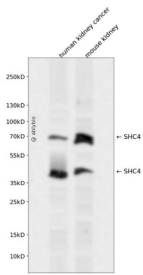
抗原信息	Recombinant fusion protein containing a sequence corresponding to amino acids 1-185 of human SHC4 (NP_976224.3).
序列	MRERGGQDSLAVLVLYVGLFGHPGMLHRKYSRFRNESITSLDEGSSGGVGNKGGSPQPPHPALAPHLPTEDATLPSQES PTPLCTLIPRMASMKLANPATLLSLKNFCLGTKEVPRLKLQESRDPGSSGSPSPETSLRSRGTAPPPQQLVGHRRATLTPD SCPLPGGPEPTLRSRQDRHFLQHL

靶点信息

研究背景	Predicted to enable receptor tyrosine kinase binding activity. Predicted to be involved in transmembrane receptor protein tyrosine kinase signaling pathway. Predicted to act upstream of or within several processes, including apoptotic process; positive regulation of cell population proliferation; and stem cell differentiation. Predicted to be located in postsynaptic membrane. Predicted to be active in plasma membrane.
------	---

基因ID	399694
基因名	SHC4
Swiss	Q6S5L8
别名	SHC4;RaLP;SHCD

产品验证



Western blot analysis of SHC4 expressed in human kidney cancer, mouse kidney using SHC4 Rabbit pAb at 1:1000. Secondary antibody: HRP Goat Anti-Rabbit IgG (H+L) at 1:5000. Lysates/proteins: 30ug per lane. Blocking buffer: 5% non-fat dry milk in TBST. Detection: ECL Enhanced Kit. Exposure time: 120s.

实验步骤

访问官网浏览详情: www.ablybio.cn