

# ALDH1B1 Rabbit pAb

货号: **AYP25278**

## 产品信息

反应	Human
宿主	Rabbit
克隆性	Polyclonal
预测反应	
应用	WB IF/ICC
推荐浓度	<b>WB:</b> 1:500 - 1:2000 <b>IF/ICC:</b> 1:50 - 1:200
理论分子量	57kDa
实测分子量	57kDa
形式	Liquid
保存条件	Store at -20°C. Avoid freeze / thaw cycles. Buffer: PBS with 0.02% sodium azide, 50% glycerol, pH7.3.
偶联物	Unconjugated
阳性对照	
细胞定位	Mitochondrion matrix
纯化	Affinity purification

## 抗原信息

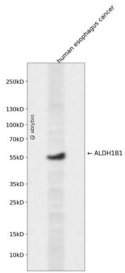
抗原信息	Recombinant fusion protein containing a sequence corresponding to amino acids 278-517 of human ALDH1B1 (NP_000683.3).
序列	NLKRVTLELGGKSPSIVLADADMEHAVEQCHEALFFNMGQCCCAGSRTFVEESIYNEFLERTVEKAKQRKVGPNPFELDTQ QGPQVDKEQFERVLGYIQLGQKEGAKLLCGGERFGERGFFIKPTVFGGVQDDMRIAKEEIFGPPVQPLFKFKIEEVVERAN NTRYGLAAVFTRDLDKAMYFTQALQAGTVVWNTYNIIVTCHTPFGGFKESGNGRELGEDGLKAYTEVKTVTIKVPQKNS

## 靶点信息

研究背景	This protein belongs to the aldehyde dehydrogenases family of proteins. Aldehyde dehydrogenase is the second enzyme of the major oxidative pathway of alcohol metabolism. This gene does not contain introns in the coding sequence. The variation of this locus may affect the development of alcohol-related problems.
------	--

基因ID	219
基因名	ALDH1B1
Swiss	P30837
别名	ALDH1B1;ALDH5;ALDHX

## 产品验证



Western blot analysis of ALDH1B1 expressed in human esophagus cancer using ALDH1B1 Rabbit pAb at 1:1000. Secondary antibody: HRP Goat Anti-Rabbit IgG (H+L) at 1:5000. Lysates/proteins: 30ug per lane. B locking buffer: 5% non-fat dry milk in TBST. Detection: ECL Enhanced Kit. Exposure time: 120s.

## 实验步骤

访问官网浏览详情: [www.ablybio.cn](http://www.ablybio.cn)