

ATP50 Rabbit pAb

货号: **AYP25269**

产品信息

反应	Human,Mouse,Rat
宿主	Rabbit
克隆性	Polyclonal
预测反应	
应用	WB IHC IF/ICC
推荐浓度	WB: 1:500 - 1:2000 IHC: 1:50 - 1:200 IF/ICC: 1:50 - 1:200
理论分子量	23kDa
实测分子量	23kDa
形式	Liquid
保存条件	Store at -20°C. Avoid freeze / thaw cycles. Buffer: PBS with 0.02% sodium azide,50% glycerol,pH7.3.
偶联物	Unconjugated
阳性对照	NCI-H460,A-549,U-251MG,SKOV3,MCF-7,Mouse liver,Mouse lung,Mouse heart,Rat heart
细胞定位	Mitochondrion,Mitochondrion inner membrane
纯化	Affinity purification

抗原信息

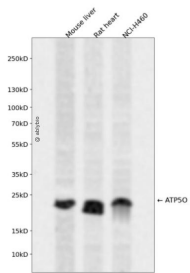
抗原信息	Recombinant fusion protein containing a sequence corresponding to amino acids 24-213 of human ATP50 (NP_001688.1).
序列	FAKLVRPPVQVYGIEGRYATALYSAASKQNKLEQVEKELLRVAQILKEPKVAASVLPYVKRSIKVKSLNDITAKERFSPLTTN LINLLAENGRLSNTQGVSFAFSTMMSVHRGEVPCTVTSASPLEEATLSELKTVLKSFLSQGQVLKLEAKTDP SILGGMIVRI GEKYVDMSVKTKIQKLGAMREIV

靶点信息

研究背景	The protein encoded by this gene is a component of the F-type ATPase found in the mitochondrial matrix. F-type ATPases are composed of a catalytic core and a membrane proton channel. The encoded protein appears to be part of the connector linking these two components and may be involved in transmission of conformational changes or proton conductance.
------	--

基因ID	539
基因名	ATP5O
Swiss	P48047
别名	ATP5O;ATPO;HMC08D05;OSCP

产品验证



Western blot analysis of ATP5O expressed in Mouse liver, Rat heart, NCI-H460 using ATP5O Rabbit pAb at 1:1000. Secondary antibody: HRP Goat Anti-Rabbit IgG (H+L) at 1:5000. Lysates/proteins: 30ug per lane. Blocking buffer: 5% non-fat dry milk in TBST. Detection: ECL Enhanced Kit. Exposure time: 120s.

实验步骤

访问官网浏览详情: www.ablybio.cn