

# SPICE1 Rabbit pAb

货号: **AYP25267**

## 产品信息

反应	Human,Mouse,Rat
宿主	Rabbit
克隆性	Polyclonal
预测反应	
应用	WB
推荐浓度	<b>WB:</b> 1:500 - 1:2000
理论分子量	96kDa
实测分子量	120kDa
形式	Liquid
保存条件	Store at -20°C. Avoid freeze / thaw cycles. Buffer: PBS with 0.02% sodium azide,50% glycerol,pH7.3.
偶联物	Unconjugated
阳性对照	293T,HeLa,BT-474,MCF7
细胞定位	Cytoplasm,centriole,centrosome,cytoskeleton,microtubule organizing center,spindle
纯化	Affinity purification

## 抗原信息

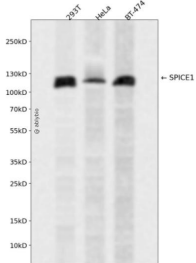
抗原信息	Recombinant fusion protein containing a sequence corresponding to amino acids 1-220 of human SPICE1 (NP_653319.1).
序列	MSFVRVNRGPRVGVKTPKVKKKKTSVKQEWDNVTVDLTVHRATPEDLVRRHEIHKSKNRALVHWELQEALKRKRWRKQKPETLNLEKRRLSIMKEILSDQYQMVDVLEKSDHLIAAAKELFRRRTGFPNVTVAPDSSQGPVVNQDPITQSIFNESVIEPQALNDVDGEEEGTVNSQSGESENENELDNSLNSQSNTNTDRFLQQLTEENFELISKL

## 靶点信息

研究背景	Regulator required for centriole duplication, for proper bipolar spindle formation and chromosome congression in mitosis.
基因ID	152185

基因名	SPICE1
Swiss	Q8N0Z3
别名	SPICE1;CCDC52;SPICE

## 产品验证



Western blot analysis of SPICE1 expressed in 293T, HeLa, BT-474 using SPICE1 Rabbit pAb at 1:1000. Secondary antibody: HRP Goat Anti-Rabbit IgG (H+L) at 1:5000. Lysates/proteins: 30ug per lane. Blocking buffer: 5% non-fat dry milk in TBST. Detection: ECL Enhanced Kit. Exposure time: 120s.

## 实验步骤

访问官网浏览详情: [www.ablybio.cn](http://www.ablybio.cn)