

RPL36 Rabbit pAb

货号: **AYP25266**

产品信息

反应	Human,Mouse,Rat
宿主	Rabbit
克隆性	Polyclonal
预测反应	
应用	WB IHC IF/ICC
推荐浓度	WB: 1:500 - 1:2000 IHC: 1:50 - 1:200 IF/ICC: 1:50 - 1:200
理论分子量	12kDa
实测分子量	15kDa
形式	Liquid
保存条件	Store at -20°C. Avoid freeze / thaw cycles. Buffer: PBS with 0.02% sodium azide,50% glycerol,pH7.3.
偶联物	Unconjugated
阳性对照	PC-12,HepG2,Jurkat,HeLa,Mouse spleen,Mouse lung,Rat spleen,Rat lung
细胞定位	cytoplasm,cytosol,cytosolic ribosome,endoplasmic reticulum,nucleolus
纯化	Affinity purification

抗原信息

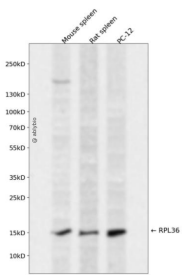
抗原信息	Recombinant fusion protein containing a sequence corresponding to amino acids 1-105 of human RPL36 (NP_056229.2).
序列	MALRYPMAVGLNKGHKVTKNVSKPRHSRRRGRLTKHTKFVRDMIREVCGFAPYERRAMELLKVSCKDRALKFIKKRVGTHIRAKRKREELSNVLAAMRKAANKD

靶点信息

研究背景	Ribosomes, the organelles that catalyze protein synthesis, consist of a small 40S subunit and a large 60S subunit. Together these subunits are composed of 4 RNA species and approximately 80 structurally distinct proteins. This gene encodes a ribosomal protein that is a component of the 60S subunit. The protein belongs to the L36E family of ribosomal proteins. It is located in the cytoplasm. Transcript variants derived from alternative splicing exist; they encode the same protein. As is typical for genes encoding ribosomal proteins, there are multiple processed pseudogenes of this gene dispersed through the genome.
------	---

基因ID	25873
基因名	RPL36
Swiss	Q9Y3U8
别名	RPL36;L36

产品验证



Western blot analysis of RPL36 expressed in Mouse spleen, Rat spleen, PC-12 using RPL36 Rabbit pAb at 1:1000. Secondary antibody: HRP Goat Anti-Rabbit IgG (H+L) at 1:5000. Lysates/proteins: 30ug per lane. Blocking buffer: 5% non-fat dry milk in TBST. Detection: ECL Enhanced Kit. Exposure time: 120s.

实验步骤

访问官网浏览详情: www.ablybio.cn