

# CBL Rabbit pAb

货号: AYP25252

## 产品信息

反应	Human,Mouse,Rat
宿主	Rabbit
克隆性	Polyclonal
预测反应	<b>WB:</b> Rattus norvegicus
应用	WB IHC IF/ICC IP
推荐浓度	<b>WB:</b> 1:1000 - 1:5000 <b>IHC:</b> 1:50 - 1:100 <b>IF/ICC:</b> 1:100 - 1:500 <b>IP:</b> 1:500 - 1:1000
理论分子量	99kDa
实测分子量	120KDa/110KDa
形式	Liquid
保存条件	Store at -20°C. Avoid freeze / thaw cycles. Buffer: PBS with 0.02% sodium azide,50% glycerol,pH7.3.
偶联物	Unconjugated
阳性对照	293T,Mouse thymus
细胞定位	Cell membrane,Cytoplasm
纯化	Affinity purification

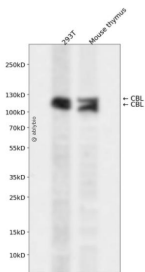
## 抗原信息

抗原信息	Recombinant fusion protein containing a sequence corresponding to amino acids 637-906 of human CBL ( NP_005179.2).
序列	LGSTFSLDTSMSMNSSPLVGPEDHPKIKPSSSANAIYSLAARPLVPKLPPEQCEGEDTEYMTSSRPLRPLDTSQSSR ACDCDQQIDSCTYEAMYNISQAPSITESSTFGEGNLAAAHANTGPEESENEDDGYDVPKPPVPAVLARRTLSDISNASSS FGWLSLDGDPTTNVTEGSQVPERPPKPFRRINSERKAGSCQQGSGPAASAATASPQLSSEIENLMSQGYSDIQKALV IAQNNIEMAKNILREFVSISSPAHVAT

## 靶点信息

研究背景	This gene is a proto-oncogene that encodes a RING finger E3 ubiquitin ligase. The encoded protein is one of the enzymes required for targeting substrates for degradation by the proteasome. This protein mediates the transfer of ubiquitin from ubiquitin conjugating enzymes (E2) to specific substrates. This protein also contains an N-terminal phosphotyrosine binding domain that allows it to interact with numerous tyrosine-phosphorylated substrates and target them for proteasome degradation. As such it functions as a negative regulator of many signal transduction pathways. This gene has been found to be mutated or translocated in many cancers including acute myeloid leukaemia, and expansion of CGG repeats in the 5' UTR has been associated with Jacobsen syndrome. Mutations in this gene are also the cause of Noonan syndrome-like disorder.
基因ID	867
基因名	CBL
Swiss	P22681
别名	C-CBL;CBL2;FRA11B;NSLL;RNF55;CBL;c-Cbl

## 产品验证



Western blot analysis of CBL expressed in 293T, Mouse thymus using CBL Rabbit pAb at 1:1000. Secondary antibody: HRP Goat Anti-Rabbit IgG (H+L) at 1:5000. Lysates/proteins: 30ug per lane. Blocking buffer: 5% non-fat dry milk in TBST. Detection: ECL Enhanced Kit. Exposure time: 120s.

## 实验步骤

访问官网浏览详情: [www.ablybio.cn](http://www.ablybio.cn)