

SHP2 Rabbit pAb

货号: **AYP25243**

产品信息

反应	Human,Mouse,Rat
宿主	Rabbit
克隆性	Polyclonal
预测反应	WB: Rattus norvegicus
应用	WB IHC IF/ICC
推荐浓度	WB: 1:1000 - 1:5000 IHC: 1:50 - 1:100 IF/ICC: 1:50 - 1:200
理论分子量	52kDa/68kDa
实测分子量	72KDa
形式	Liquid
保存条件	Store at -20°C. Avoid freeze / thaw cycles. Buffer: PBS with 0.05% proclin300,50% glycerol,pH7.3.
偶联物	Unconjugated
阳性对照	293T,NIH/3T3,Mouse brain,Mouse heart,Rat lung
细胞定位	Cytoplasm
纯化	Affinity purification

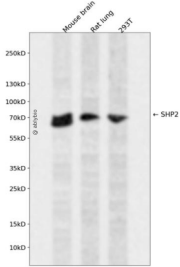
抗原信息

抗原信息	Recombinant fusion protein containing a sequence corresponding to amino acids 1-244 of human SHP2 (NP_001317366.1).
序列	MTSRRWFHPNITGVEAENLLLTRGVDGSFLARPSKSNPGDFTLSVRRNGAVTHIKIQNTGDYDLYGGEKFATLAELVQYY MEHHGQLKEKNGDVIELKYPLNCADPTSERWFHGLSGKEAEKLLTEKGKHSFLVRESQSHPGDFVLSVRTGDDKGES NDGKSKVTHVMIRCQELKYDVGGGERFDSLTDLVEHYKKNPMVETLGTVLQLKQPLNTRINAAEIESRVRELSKLAETTD KVK

靶点信息

研究背景	The protein encoded by this gene is a member of the protein tyrosine phosphatase (PTP) family. PTPs are known to be signaling molecules that regulate a variety of cellular processes including cell growth, differentiation, mitotic cycle, and oncogenic transformation. This PTP contains two tandem Src homology-2 domains, which function as phospho-tyrosine binding domains and mediate the interaction of this PTP with its substrates. This PTP is widely expressed in most tissues and plays a regulatory role in various cell signaling events that are important for a diversity of cell functions, such as mitogenic activation, metabolic control, transcription regulation, and cell migration. Mutations in this gene are a cause of Noonan syndrome as well as acute myeloid leukemia. Two transcript variants encoding different isoforms have been found for this gene.
基因ID	5781
基因名	PTPN11
Swiss	Q06124
别名	BPTP3;CFC;JMML;METCDS;NS1;PTP-1D;PTP2C;SH-PTP2;SH-PTP3;SHP2;PTPN11

产品验证



Western blot analysis of SHP2 expressed in Mouse brain,Rat lung,293T using SHP2 Rabbit pAb at 1:1000 . Secondary antibody: HRP Goat Anti-Rabbit IgG (H+L) at 1:5000. Lysates/proteins: 30ug per lane. Blocking buffer: 5% non-fat dry milk in TBST. Detection: ECL Enhanced Kit. Exposure time: 120s.

实验步骤

访问官网浏览详情: www.ablybio.cn