

HAUS6 Rabbit pAb

货号: **AYP25239**

产品信息

反应	Human,Mouse
宿主	Rabbit
克隆性	Polyclonal
预测反应	IF: Homo sapiens
应用	WB
推荐浓度	WB: 1:500 - 1:2000
理论分子量	69kDa/104kDa/108kDa
实测分子量	109kDa
形式	Liquid
保存条件	Store at -20°C. Avoid freeze / thaw cycles. Buffer: PBS with 0.02% sodium azide,50% glycerol,pH7.3.
偶联物	Unconjugated
阳性对照	Mouse spleen,Mouse thymus
细胞定位	Cytoplasm,centrosome,cytoskeleton,microtubule organizing center,spindle
纯化	Affinity purification

抗原信息

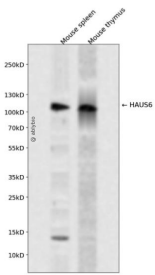
抗原信息	Recombinant fusion protein containing a sequence corresponding to amino acids 676-955 of human HAU S6 (NP_060115.3).
序列	DEPPTQNQSDLLNKKVICKQDLECLAFTKLSETSRMETFSPA VGNRIDVMGGSEEEFMKILDHLEVSCNKPSTNKTMLWN SFQISSGISSKSFKDNDGILHETLPEEVGHLFSNSSSSSEANFKLEPNSPMHGGTLLLEDVVGGRQTTPESDFNLQALRSR YEALKKSLSKKREESYLSNSQTPERHKPELSPTPQNVQTD DTLNFLDTCDLHTEHIKPSLRTSIGERKRSLSPLIKFSPEQRL RTTIACSLGELPNLKEEDILNKSLDAKEPPSDLTR

靶点信息

研究背景	The protein encoded by this gene is a subunit of the augmin complex. The augmin complex plays a role in microtubule attachment to the kinetochore and central spindle formation. This protein may have a role in efficient chromosome congression and segregation by promoting microtubule-dependent microtubule amplification. Pseudogenes of this gene are located on chromosomes 7 and 20. Alternative splicing results in multiple transcript variants that encode different protein isoforms.
------	--

基因ID	54801
基因名	HAUS6
Swiss	Q7Z4H7
别名	HAUS6;Dgt6;FAM29A

产品验证



Western blot analysis of HAUS6 expressed in Mouse spleen, Mouse thymus using HAUS6 Rabbit pAb at 1:1000. Secondary antibody: HRP Goat Anti-Rabbit IgG (H+L) at 1:5000. Lysates/proteins: 30ug per lane. Blocking buffer: 5% non-fat dry milk in TBST. Detection: ECL Enhanced Kit. Exposure time: 120s.

实验步骤

访问官网浏览详情: www.ablybio.cn