

BLOC1S2 Rabbit pAb

货号: AYP25229

产品信息

反应	Human,Mouse,Rat
宿主	Rabbit
克隆性	Polyclonal
预测反应	WB: Homo sapiens
应用	WB IHC
推荐浓度	WB: 1:500 - 1:2000 IHC: 1:50 - 1:100
理论分子量	11kDa/15kDa
实测分子量	16kDa
形式	Liquid
保存条件	Store at -20°C. Avoid freeze / thaw cycles. Buffer: PBS with 0.02% sodium azide,50% glycerol,pH7.3.
偶联物	Unconjugated
阳性对照	NIH/3T3,Mouse liver,Rat brain
细胞定位	Cytoplasm,centrosome,cytoskeleton,microtubule organizing center
纯化	Affinity purification

抗原信息

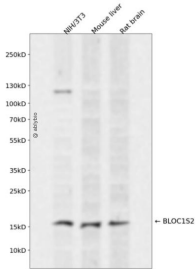
抗原信息	Recombinant fusion protein containing a sequence corresponding to amino acids 44-142 of human BLOC1S2 (NP_776170.2).
序列	MFSKMATYLTGELTATSSEDYKLENNMKNLTKYLEMKDIAINISRNKDLNQKYAGLQPYLDQINVIEEQVAALEQAAYKLDAYSKKLEAKYKKLEKR

靶点信息

研究背景	This gene encodes a protein with multiple functions. The encoded protein has been found in association with the centrosome, shown to co-localize with gamma-tubulin, and also found to be one of the proteins in the BLOC-1 complex which functions in the formation of lysosome-related organelles. A pseudogene of this gene is located on the X chromosome. Alternative splicing results in multiple transcript variants.
基因ID	282991

基因名	BLOC1S2
Swiss	Q6QNY1
别名	BLOC1S2;BLOS2;BORCS2;CEAP;CEAP11

产品验证



Western blot analysis of BLOC1S2 expressed in NIH/3T3, Mouse liver, Rat brain using BLOC1S2 Rabbit p Ab at 1:1000. Secondary antibody: HRP Goat Anti-Rabbit IgG (H+L) at 1:5000. Lysates/proteins: 30ug per lane. Blocking buffer: 5% non-fat dry milk in TBST. Detection: ECL Enhanced Kit. Exposure time: 12 0s.

实验步骤

访问官网浏览详情: www.ablybio.cn