

# PPM1A Rabbit pAb

货号: **AYP25215**

## 产品信息

反应	Human,Mouse,Rat
宿主	Rabbit
克隆性	Polyclonal
预测反应	<b>IF:</b> Human hepatoma cells <b>WB:</b> Human liver cell , Mus musculus <b>IHC:</b> Mouse Embryonic Stem Cells
应用	WB IF/ICC
推荐浓度	<b>WB:</b> 1:500 - 1:2000 <b>IF/ICC:</b> 1:50 - 1:200
理论分子量	35kDa/42kDa/51kDa
实测分子量	42kDa
形式	Liquid
保存条件	Store at -20°C. Avoid freeze / thaw cycles. Buffer: PBS with 0.02% sodium azide,50% glycerol,pH7.3.
偶联物	Unconjugated
阳性对照	MCF-7,HeLa,HepG2,SH-SY5Y,Mouse liver,Mouse skeletal muscle,Rat brain
细胞定位	Cytoplasm,Lipid-anchor,Membrane,Nucleus,cytosol
纯化	Affinity purification

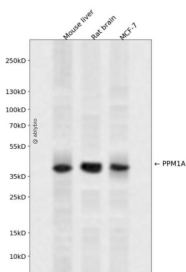
## 抗原信息

抗原信息	Recombinant fusion protein containing a sequence corresponding to amino acids 1-382 of human PPM1A (NP_066283.1).
序列	MGAFLDKPKMEKHNAQQGNGRLRYGLSSMQGWRVEMEDAHTAVIGLPSGLESWSFFAVYDGHAGSQVAKYCCEHLL DHITNNQDFKGSAGAPSVENVKNGIRTGFLEIDEHMRVMSEKKHGADRSGSTAVGVLPQHTYFINGDSRGLLCRNRK VHFFTQDHKPSNPLEKERIQNAGGSVMIQRVNGSLAVSRALGDFDYKCVHGKGPTEQLVSPPEVHDIERSEDDQFIIA CDGIWDVMGNEELCDFVRSRLEVTDLDLEKVCNEVDTCLYKGRDNMSVILICFPNAPKVSPEAVKKEAELDKYLECRVEE IIKKQGEVPLVHVMRTLASENIPSLPPGGELASKRNVIEAVYNRLNPYKNDTDDTSTDDMW

## 靶点信息

研究背景	The protein encoded by this gene is a member of the PP2C family of Ser/Thr protein phosphatases. PP2C family members are known to be negative regulators of cell stress response pathways. This phosphatase dephosphorylates, and negatively regulates the activities of, MAP kinases and MAP kinase kinases. It has been shown to inhibit the activation of p38 and JNK kinase cascades induced by environmental stresses. This phosphatase can also dephosphorylate cyclin-dependent kinases, and thus may be involved in cell cycle control. Overexpression of this phosphatase is reported to activate the expression of the tumor suppressor gene TP53/p53, which leads to G2/M cell cycle arrest and apoptosis. Three alternatively spliced transcript variants encoding distinct isoforms have been described.
基因ID	5494
基因名	PPM1A
Swiss	P35813
别名	PPM1A;PP2C-ALPHA;PP2CA;PP2Calpha

## 产品验证



Western blot analysis of PPM1A expressed in Mouse liver, Rat brain, MCF-7 using PPM1A Rabbit pAb at 1:1000. Secondary antibody: HRP Goat Anti-Rabbit IgG (H+L) at 1:5000. Lysates/proteins: 30ug per lane. Blocking buffer: 5% non-fat dry milk in TBST. Detection: ECL Enhanced Kit. Exposure time: 120s.

## 实验步骤

访问官网浏览详情: [www.ablybio.cn](http://www.ablybio.cn)