

LRPPRC Rabbit pAb

货号: **AYP25192**

产品信息

反应	Human,Mouse,Rat
宿主	Rabbit
克隆性	Polyclonal
预测反应	WB: Mus musculus , Homo sapiens IHC: Mus musculus
应用	WB IHC IF/ICC
推荐浓度	WB: 1:1000 - 1:5000 IHC: 1:50 - 1:200 IF/ICC: 1:100 - 1:200
理论分子量	157kDa
实测分子量	158KDa
形式	Liquid
保存条件	Store at -20°C. Avoid freeze / thaw cycles. Buffer: PBS with 0.02% sodium azide,50% glycerol,pH7.3.
偶联物	Unconjugated
阳性对照	HepG2,HeLa,Mouse heart,Rat heart,Rat brain
细胞定位	Mitochondrion,Nucleus,Nucleus inner membrane,Nucleus outer membrane,nucleoplasm
纯化	Affinity purification

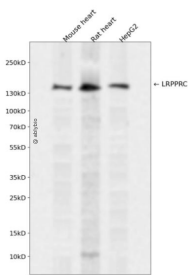
抗原信息

抗原信息	Recombinant fusion protein containing a sequence corresponding to amino acids 1041-1394 of human LRPPRC (NP_573566.2).
序列	IACRLNQKKGAYDIFLNAKEQNIVFNAETYSNLIKLLMSSEDYFTQAMEVKKAFAETHIKGFTLNDAANSRLIITQVRRDYLKEAV TTLKTVLDQQQTPSRLAVTRVIQALAMKGDVENIEVVQMLNGLEDSIGLSKMVFINNIALAQIKNNNIDAAIENIENMLTSE NKVIEPQYFGLAYLFRKVIIEQLEPAVEKISIMAERLANQFAIYKPVTDFFLQLVDAGKVDDARALLQRCGAIAEQTPILLFLL RNSRKQGKASTVKSVLELIPELNEKEEAYNSLMKSYVSEKDVTSAKALYEHHTAKNTKLDDLFLKRYASLLKYAGEPVPFIEP PESFEFYAQQRLKRENS

靶点信息

研究背景	This gene encodes a leucine-rich protein that has multiple pentatricopeptide repeats (PPR). The precise role of this protein is unknown but studies suggest it may play a role in cytoskeletal organization, vesicular transport, or in transcriptional regulation of both nuclear and mitochondrial genes. The protein localizes primarily to mitochondria and is predicted to have an N-terminal mitochondrial targeting sequence. Mutations in this gene are associated with the French-Canadian type of Leigh syndrome.
基因ID	10128
基因名	LRPPRC
Swiss	P42704
别名	LRPPRC;CLONE-23970;GP130;LRP130;LSFC

产品验证



Western blot analysis of LRPPRC expressed in Mouse heart,Rat heart,HepG2 using LRPPRC Rabbit pAb at 1:1000. Secondary antibody: HRP Goat Anti-Rabbit IgG (H+L) at 1:5000. Lysates/proteins: 30ug per lane. Blocking buffer: 5% non-fat dry milk in TBST. Detection: ECL Enhanced Kit. Exposure time: 120s.

实验步骤

访问官网浏览详情: www.ablybio.cn