

Alpha-tubulin (ubiquitous) chain Rabbit pAb

货号: **AYP25187**

产品信息

反应	Human,Mouse,Rat
宿主	Rabbit
克隆性	Polyclonal
预测反应	WB: Rattus norvegicus , Homo sapiens IF: Sus scrofa
应用	WB IF/ICC
推荐浓度	WB: 1:500 - 1:1000 IF/ICC: 1:50 - 1:200
理论分子量	37kDa/50kDa
实测分子量	50KDa
形式	Liquid
保存条件	Store at -20°C. Avoid freeze / thaw cycles. Buffer: PBS with 0.01% thiomersal,50% glycerol,pH7.3.
偶联物	Unconjugated
阳性对照	HeLa,PC-12,A-549,NIH/3T3,U-251MG,Mouse brain ,Rat brain
细胞定位	Cytoplasm,cytoskeleton
纯化	Affinity purification

抗原信息

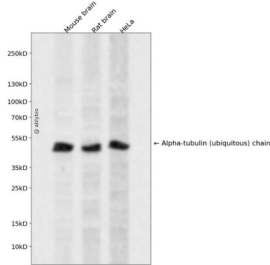
抗原信息	Recombinant fusion protein containing a sequence within amino acids 1-80 of human Alpha-tubulin (ubiquitous) chain (NP_006073.2).
序列	MRECISIHVGQAGVQIGNACWELYCLEHGIQPDGQMPSDKTIGGGDDSFNTFFSETGAGKHVPRAVFVDLEPTVIDEVRT

靶点信息

研究背景	Tubulin is the major constituent of microtubules. It binds two moles of GTP, one at an exchangeable site on the beta chain and one at a non-exchangeable site on the alpha chain.
基因ID	10376

基因名	TUBA1B
Swiss	P68363
别名	TUBA1B;K-ALPHA-1

产品验证



Western blot analysis of Alpha-tubulin (ubiquitous) chain expressed in Mouse brain ,Rat brain,HeLa using Alpha-tubulin (ubiquitous) chain Rabbit pAb at 1:1000. Secondary antibody: HRP Goat Anti-Rabbit IgG (H+L) at 1:5000. Lysates/proteins: 30ug per lane. Blocking buffer: 5% non-fat dry milk in TBST. Detection: ECL Enhanced Kit. Exposure time: 120s.

实验步骤

访问官网浏览详情: www.ablybio.cn