

Cyclin D2 Rabbit pAb

货号: AYP25178

产品信息

反应	Human,Mouse,Rat
宿主	Rabbit
克隆性	Polyclonal
预测反应	WB: Mus musculus
应用	WB
推荐浓度	WB: 1:500 - 1:1000
理论分子量	24kDa/33kDa
实测分子量	34kDa
形式	Liquid
保存条件	Store at -20°C. Avoid freeze / thaw cycles. Buffer: PBS with 0.02% sodium azide,50% glycerol,pH7.3.
偶联物	Unconjugated
阳性对照	NIH/3T3,Mouse spleen,Rat lung
细胞定位	Cytoplasm,Membrane,Nucleus
纯化	Affinity purification

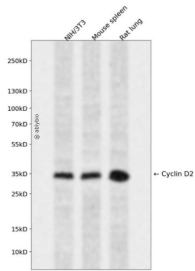
抗原信息

抗原信息	Recombinant fusion protein containing a sequence corresponding to amino acids 1-289 of human Cyclin D2 (NP_001750.1).
序列	MELLCHEVDPVRRRAVRDRNLLRDDRVLQNLITIEERYLPQCSYFKCVQKDIQPYMRRMVATWMLEVCEEQKCEEEVFPLA MNYLDRFLAGVPTPKSHLQLLGAVCMFLASKLKETSPLTAEKLCIYTDNSIKPQELLEWELVVLGKWKWNLAAVTPHDFIEHI LRKLPQQRKLSLIRKHAQTFIALCATDFKFKAMYPPSMIATGSVGAICGLQQDEEVSSLTCDALTELLAKITNTDVDCLKAC QEIQEAVLLNSLQYRQDQRDGSSEDELQASTPTDVRDIDL

靶点信息

研究背景	The protein encoded by this gene belongs to the highly conserved cyclin family, whose members are characterized by a dramatic periodicity in protein abundance through the cell cycle. Cyclins function as regulators of CDK kinases. Different cyclins exhibit distinct expression and degradation patterns which contribute to the temporal coordination of each mitotic event. This cyclin forms a complex with CDK4 or CDK6 and functions as a regulatory subunit of the complex, whose activity is required for cell cycle G1/S transition. This protein has been shown to interact with and be involved in the phosphorylation of tumor suppressor protein Rb. Knockout studies of the homologous gene in mouse suggest the essential roles of this gene in ovarian granulosa and germ cell proliferation. High level expression of this gene was observed in ovarian and testicular tumors. Mutations in this gene are associated with megalencephaly-polymicrogyria-polydactyly-hydrocephalus syndrome 3 (MPPH3).
基因ID	894
基因名	CCND2
Swiss	P30279
别名	CCND2;KIAK0002;MPPH3;cyclin D2;Cyclin D2

产品验证



Western blot analysis of Cyclin D2 expressed in NIH/3T3, Mouse spleen, Rat lung using Cyclin D2 Rabbit pAb at 1:1000. Secondary antibody: HRP Goat Anti-Rabbit IgG (H+L) at 1:5000. Lysates/proteins: 30ug per lane. Blocking buffer: 5% non-fat dry milk in TBST. Detection: ECL Enhanced Kit. Exposure time: 120s.

实验步骤

访问官网浏览详情: www.ablybio.cn