

# Notch1 Rabbit pAb

货号: AYP25166

## 产品信息

反应	Human,Mouse,Rat
宿主	Rabbit
克隆性	Polyclonal
预测反应	<b>WB:</b> Human skin T cell lymphoma , HL60,Hut102 , Homo sapiens , Mus musculus , Rattus norvegicus
应用	<a href="#">WB</a> <a href="#">IHC</a> <a href="#">IF/ICC</a>
推荐浓度	<b>WB:</b> 1:500 - 1:1000 <b>IHC:</b> 1:50 - 1:200 <b>IF/ICC:</b> 1:50 - 1:200
理论分子量	272kDa
实测分子量	300KDa
形式	Liquid
保存条件	Store at -20°C. Avoid freeze / thaw cycles. Buffer: PBS with 0.05% proclin300,50% glycerol,pH7.3.
偶联物	Unconjugated
阳性对照	HeLa,HepG2,Mouse lung,Mouse brain,Rat brain
细胞定位	Cell membrane,Nucleus,Single-pass type I membrane protein
纯化	Affinity purification

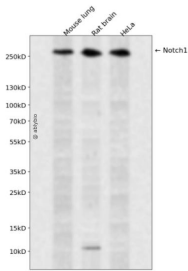
## 抗原信息

抗原信息	Recombinant fusion protein containing a sequence corresponding to amino acids 1567-1729 of human Notch1 (NP_060087.3).
序列	ERLAAGTLVVVVLMPPEQLRNSSFHFLRELSRVLHTNVVFKRDAHGQQMIFPYYGREEELRKHPIKRAAEGWAAPDALLGQVKASLLPGGSEGGRRRRRELDPM DVRSIVYLEIDNRQCVQASSQCFQSATDVA AFLGALASLGS LNIPYKIEAVQSETVEP P

## 靶点信息

研究背景	This gene encodes a member of the NOTCH family of proteins. Members of this Type I transmembrane protein family share structural characteristics including an extracellular domain consisting of multiple epidermal growth factor-like (EGF) repeats, and an intracellular domain consisting of multiple different domain types. Notch signaling is an evolutionarily conserved intercellular signaling pathway that regulates interactions between physically adjacent cells through binding of Notch family receptors to their cognate ligands. The encoded preprotein is proteolytically processed in the trans-Golgi network to generate two polypeptide chains that heterodimerize to form the mature cell-surface receptor. This receptor plays a role in the development of numerous cell and tissue types. Mutations in this gene are associated with aortic valve disease, Adams-Oliver syndrome, T-cell acute lymphoblastic leukemia, chronic lymphocytic leukemia, and head and neck squamous cell carcinoma.
基因ID	4851
基因名	NOTCH1
Swiss	P46531
别名	AOS5;AOVD1;TAN1;hN1;NOTCH1;Activated NOTCH1;notch 1

## 产品验证



Western blot analysis of Notch1 expressed in Mouse lung, Rat brain, HeLa using Notch1 Rabbit pAb at 1:1000. Secondary antibody: HRP Goat Anti-Rabbit IgG (H+L) at 1:5000. Lysates/proteins: 30ug per lane. Blocking buffer: 5% non-fat dry milk in TBST. Detection: ECL Enhanced Kit. Exposure time: 120s.

## 实验步骤

访问官网浏览详情: [www.ablybio.cn](http://www.ablybio.cn)