

# COX1 Rabbit pAb

货号: **AYP25161**

## 产品信息

反应	Human,Mouse
宿主	Rabbit
克隆性	Polyclonal
预测反应	<b>WB:</b> Homo sapiens , Mus musculus , Sus scrofa , Gallus gallus <b>IF:</b> Brachyura
应用	<a href="#">WB</a> <a href="#">IHC</a>
推荐浓度	<b>WB:</b> 1:100 - 1:500 <b>IHC:</b> 1:50 - 1:200
理论分子量	56kDa
实测分子量	37KDa
形式	Liquid
保存条件	Store at -20°C. Avoid freeze / thaw cycles. Buffer: PBS with 0.05% proclin300,50% glycerol,pH7.3.
偶联物	Unconjugated
阳性对照	NIH/3T3
细胞定位	Mitochondrion inner membrane,Multi-pass membrane protein
纯化	Affinity purification

## 抗原信息

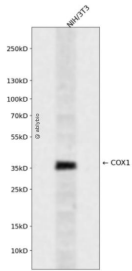
抗原信息	A synthetic peptide corresponding to a sequence within amino acids 400 to the C-terminus of mouse COX 1 (NP_904330.1).
序列	FSGFTLDDTWAKAHFAIMFVGVNMTFFPQHFLGLSGMPRRYSYDPDAYTTWNTVSSMGSFISLTAVLIMIFMIWEAFASK REVMVSVYASTNLEWLHGCPPPYHTFEPTYVKVK

## 靶点信息

研究背景	Enables cytochrome-c oxidase activity. Predicted to be involved in electron transport coupled proton transport; mitochondrial electron transport, cytochrome c to oxygen; and response to oxidative stress. Located in mitochondrial inner membrane. Part of mitochondrial respiratory chain complex IV. Is expressed in several structures, including brown fat; heart; liver; metanephros; and skeletal muscle. Orthologous to human MT-CO1 (mitochondrially encoded cytochrome c oxidase I).
------	---

基因ID	17708
基因名	
Swiss	
别名	MT-CO1;COI;MTCO1;COX1

## 产品验证



Western blot analysis of COX1 expressed in NIH/3T3 using COX1 Rabbit pAb at 1:1000. Secondary antibody: HRP Goat Anti-Rabbit IgG (H+L) at 1:5000. Lysates/proteins: 30ug per lane. Blocking buffer: 5% non-fat dry milk in TBST. Detection: ECL Enhanced Kit. Exposure time: 120s.

## 实验步骤

访问官网浏览详情: [www.ablybio.cn](http://www.ablybio.cn)