

Rabbit anti HA-Tag pAb

货号: AYP25143

产品信息

反应	All
宿主	Rabbit
克隆性	Polyclonal
预测反应	WB: Mus musculus , Homo sapiens , Chlamydomonas , Arabidopsis thaliana , Penicillium oxalicum , Human IP: Homo sapiens , Mus musculus IF: Homo sapiens , Mus musculus
应用	WB IF/ICC
推荐浓度	WB: 1:2000 - 1:6000 IF: 1:50 - 1:200
理论分子量	
实测分子量	26KDa
形式	Liquid
保存条件	Store at -20°C. Avoid freeze / thaw cycles. Buffer: PBS with 0.05% proclin300,50% glycerol,pH7.3.
偶联物	Unconjugated
阳性对照	293T
细胞定位	
纯化	Affinity purification

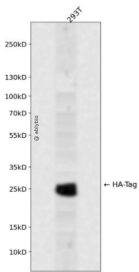
抗原信息

抗原信息	A synthetic peptide corresponding to HA-Tag.
序列	YPVDVPDYA

靶点信息

研究背景	Protein tags are peptide sequences genetically grafted onto a recombinant protein. Often these tags are removable by chemical agents or by enzymatic means, such as proteolysis or intein splicing. Tags are attached to proteins for various purposes. Epitope tags are short peptide sequences which are chosen because high-affinity antibodies can be reliably produced in many different species. These are usually derived from viral genes, which explain their high immunoreactivity. Epitope tags include V5-tag, Myc-tag, HA-tag and NE-tag. These tags are particularly useful for western blotting, immunofluorescence and immunoprecipitation experiments, although they also find use in antibody purification.
基因ID	
基因名	
Swiss	
别名	HA;HA tag;HA-tag

产品验证



Western blot analysis of HA-Tag expressed in 293T using Rabbit anti HA-Tag pAb at 1:1000. Secondary antibody: HRP Goat Anti-Rabbit IgG (H+L) at 1:5000. Lysates/proteins: 30ug per lane. Blocking buffer: 5% non-fat dry milk in TBST. Detection: ECL Enhanced Kit. Exposure time: 120s.

实验步骤

访问官网浏览详情: www.ablybio.cn