

# Rabbit anti FLAG-Tag pAb

货号: AYP25139

## 产品信息

反应	All
宿主	Rabbit
克隆性	Polyclonal
预测反应	<b>IP:</b> Mus musculus , Oryza sativa , Xanthonycticebus pygmaeus , Homo sapiens , Danio rerio <b>WB:</b> Homo sapiens,Mus musculus , Sus scrofa <b>ChIP:</b> Homo sapiens <b>IF:</b> Homo sapiens , Sus scrofa <b>Co-IP:</b> Homo sapiens <b>IHC:</b> Mus musculus
应用	WB IHC IP
推荐浓度	<b>WB:</b> 1:1000 - 1:2000 <b>IHC:</b> 1:50 - 1:100 <b>IF/ICC:</b> 1:50 - 1:200 <b>IP:</b> 1:50 - 1:100
理论分子量	
实测分子量	48KDa
形式	Liquid
保存条件	Store at -20°C. Avoid freeze / thaw cycles. Buffer: PBS with 0.05% proclin300,50% glycerol,pH7.3.
偶联物	Unconjugated
阳性对照	293T
细胞定位	
纯化	Affinity purification

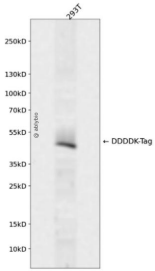
## 抗原信息

抗原信息	A synthetic peptide corresponding to DDDDK tag.
序列	DYKDDDDK

## 靶点信息

研究背景	FLAG-tag, or FLAG octapeptide, or FLAG epitope, is a polypeptide protein tag that can be added to a protein using recombinant DNA technology, having the sequence motif DYKDDDDK. It has been used for studying proteins in living cells and for protein purification by affinity chromatography. It has been used to separate recombinant, overexpressed protein from wild-type protein expressed by the host organism. It can also be used in the isolation of protein complexes with multiple subunits, because its mild purification procedure tends not to disrupt such complexes. It has been used to obtain proteins of sufficient purity and quality to carry out 3D structure determination by x-ray crystallography. A FLAG-tag can be used in many different assays that require recognition by an antibody. If there is no antibody against a given protein, adding a FLAG-tag to a protein allows the protein to be studied with an antibody against the FLAG sequence. Examples are cellular localization studies by immunofluorescence or detection by SDS PAGE protein electrophoresis and Western blotting.
基因ID	
基因名	
Swiss	
别名	DDDDK;DDDDK tag;DDDDK-tag

## 产品验证



Western blot analysis of DDDDK-Tag expressed in 293T using Rabbit anti DDDDK-Tag pAb at 1:1000. Secondary antibody: HRP Goat Anti-Rabbit IgG (H+L) at 1:5000. Lysates/proteins: 30ug per lane. Blocking buffer: 5% non-fat dry milk in TBST. Detection: ECL Enhanced Kit. Exposure time: 120s.

## 实验步骤

访问官网浏览详情: [www.ablybio.cn](http://www.ablybio.cn)