

Phospho-NF-kB p65/RelA-S276 Rabbit pAb

货号: AYP25120

产品信息

反应	Human
宿主	Rabbit
克隆性	Polyclonal
预测反应	IF: Mus musculus , Rattus norvegicus , carp WB: Homo sapiens , Mus musculus , Rattus norvegicus , Schisandra chinensis , Sus scrofa , carp , Gallus gallus IHC: Mus musculus , Rattus norvegicus
应用	WB
推荐浓度	WB: 1:500 - 1:2000
理论分子量	58kDa/59kDa/60kDa
实测分子量	65KDa
形式	Liquid
保存条件	Store at -20°C. Avoid freeze / thaw cycles. Buffer: PBS with 0.05% proclin300,50% glycerol,pH7.3.
偶联物	Unconjugated
阳性对照	HeLa
细胞定位	Cytoplasm,Nucleus
纯化	Affinity purification

抗原信息

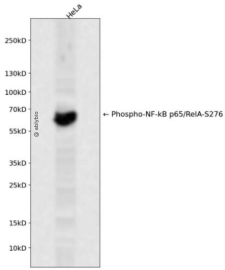
抗原信息	A synthetic phosphorylated peptide around S276 of human RelA (NP_068810.3).
序列	RPSDR

靶点信息

研究背景	NF-kappa-B is a ubiquitous transcription factor involved in several biological processes. It is held in the cytoplasm in an inactive state by specific inhibitors. Upon degradation of the inhibitor, NF-kappa-B moves to the nucleus and activates transcription of specific genes. NF-kappa-B is composed of NFKB1 or NFKB2 bound to either REL, RELA, or RELB. The most abundant form of NF-kappa-B is NFKB1 complexed with the product of this gene, RELA. Four transcript variants encoding different isoforms have been found for this gene.
------	--

基因ID	5970
基因名	RELA
Swiss	Q04206
别名	NFKB3;p65;NF-kB p65;RELA;CMCU

产品验证



Western blot analysis of Phospho-NF-kB p65/RelA-S276 expressed in HeLa using Phospho-NF-kB p65/RelA-S276 Rabbit pAb at 1:1000. Secondary antibody: HRP Goat Anti-Rabbit IgG (H+L) at 1:5000. Lysates/proteins: 30ug per lane. Blocking buffer: 5% non-fat dry milk in TBST. Detection: ECL Enhanced Kit. Exposure time: 120s.

实验步骤

访问官网浏览详情: www.ablybio.cn