

IFI16 Rabbit pAb

货号: **AYP25098**

产品信息

反应	Human,Mouse,Rat
宿主	Rabbit
克隆性	Polyclonal
预测反应	WB: Mus musculus , Homo sapiens
应用	WB IF/ICC
推荐浓度	WB: 1:500 - 1:1000 IF/ICC: 1:50 - 1:200
理论分子量	75kDa/82kDa/88kDa
实测分子量	85-90KDa
形式	Liquid
保存条件	Store at -20°C. Avoid freeze / thaw cycles. Buffer: PBS with 0.01% thiomersal,50% glycerol,pH7.3.
偶联物	Unconjugated
阳性对照	HeLa,MCF7,NIH/3T3,THP-1,Mouse ovary,Mouse spleen,Rat ovary
细胞定位	Cytoplasm,Nucleus
纯化	Affinity purification

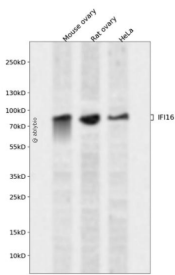
抗原信息

抗原信息	Recombinant fusion protein containing a sequence corresponding to amino acids 560-785 of human IFI16 (NP_001351796.1).
序列	LKTEPEEVSIEDSAQSDLKEVMVLNATESFVYEPKEQKKMFHATVATENEVFRVKVFNIDLKEKFTPKKIIAIANYVCRNGFLE VYPFTLVADVNADRNMEIPKGLIRASVTPKINQLCSQTKGSFVNGVFEVHKKNVRGEFTYYEIQDNTGKMEVVVHGRLTTI NCEEGDKLKLTCFELAPKSGNTGELRSVIHSHIKVIKTRKNKKDILNPDSSMETSPDFFF

靶点信息

研究背景	This gene encodes a member of the HIN-200 (hematopoietic interferon-inducible nuclear antigens with 200 amino acid repeats) family of cytokines. The encoded protein contains domains involved in DNA binding, transcriptional regulation, and protein-protein interactions. The protein localizes to the nucleoplasm and nucleoli, and interacts with p53 and retinoblastoma-1. It modulates p53 function, and inhibits cell growth in the Ras/Raf signaling pathway. Alternatively spliced transcript variants encoding different isoforms have been found for this gene.
基因ID	3428
基因名	IFI16
Swiss	Q16666
别名	IFI16;IFNGIP1;PYHIN2

产品验证



Western blot analysis of IFI16 expressed in Mouse ovary, Rat ovary, HeLa using IFI16 Rabbit pAb at 1:1000. Secondary antibody: HRP Goat Anti-Rabbit IgG (H+L) at 1:5000. Lysates/proteins: 30ug per lane. Blocking buffer: 5% non-fat dry milk in TBST. Detection: ECL Enhanced Kit. Exposure time: 120s.

实验步骤

访问官网浏览详情: www.ablybio.cn