

IL18 Rabbit pAb

货号: **AYP25092**

产品信息

反应	Human,Mouse,Rat
宿主	Rabbit
克隆性	Polyclonal
预测反应	WB: Rattus norvegicus , Mus musculus , Homo sapiens , Danio rerio , Hippocampal ELISA: Homo sapiens IHC: Mus musculus
应用	WB IF/ICC IP
推荐浓度	WB: 1:1000 - 1:5000 IF/ICC: 1:50 - 1:200 IP: 1:50 - 1:200
理论分子量	21kDa/22kDa
实测分子量	22KDa
形式	Liquid
保存条件	Store at -20°C. Avoid freeze / thaw cycles. Buffer: PBS with 0.05% proclin300,50% glycerol,pH7.3.
偶联物	Unconjugated
阳性对照	DU145,HeLa,Raji(Negative control)
细胞定位	Secreted
纯化	Affinity purification

抗原信息

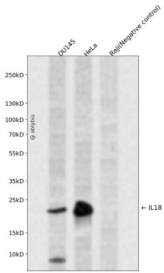
抗原信息	A synthetic peptide corresponding to a sequence within amino acids 40-100 of human IL18 (NP_001553.1).
序列	KLESKLSVIRNLNDQVLFIDQGNRPLFEDMTDSDCRDNAPRTIFIISMYKDSQPRGMAVTI

靶点信息

研究背景	The protein encoded by this gene is a proinflammatory cytokine that augments natural killer cell activity in spleen cells, and stimulates interferon gamma production in T-helper type I cells. Alternatively spliced transcript variants encoding different isoforms have been found for this gene.
------	--

基因ID	3606
基因名	IL18
Swiss	Q14116
别名	IL18;IGIF;IL-18;IL-1g;IL1F4

产品验证



Western blot analysis of IL18 expressed in DU145, HeLa, Raji (Negative control) using IL18 Rabbit pAb at 1:1000. Secondary antibody: HRP Goat Anti-Rabbit IgG (H+L) at 1:5000. Lysates/proteins: 30ug per lane. Blocking buffer: 5% non-fat dry milk in TBST. Detection: ECL Enhanced Kit. Exposure time: 120s.

实验步骤

访问官网浏览详情: www.ablybio.cn