

# CLEC4D Rabbit pAb

货号: **AYP25071**

## 产品信息

反应	Human,Mouse,Rat
宿主	Rabbit
克隆性	Polyclonal
预测反应	<b>WB:</b> Mus musculus
应用	<a href="#">WB</a> <a href="#">IF/ICC</a>
推荐浓度	<b>WB:</b> 1:1000 - 1:4000 <b>IF/ICC:</b> 1:50 - 1:200
理论分子量	24kDa
实测分子量	27KDa
形式	Liquid
保存条件	Store at -20°C. Avoid freeze / thaw cycles. Buffer: PBS with 0.01% thiomersal,50% glycerol,pH7.3.
偶联物	Unconjugated
阳性对照	Mouse spleen,Rat lung
细胞定位	Membrane,Single-pass type II membrane protein
纯化	Affinity purification

## 抗原信息

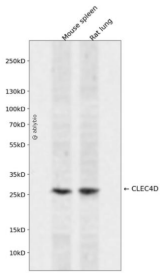
抗原信息	Recombinant fusion protein containing a sequence corresponding to amino acids 100-215 of human CLEC4D (NP_525126.2).
序列	TDNKTWAESERNCSGMGAHLMTISTEAEQNFIIQFLDRRLSYFLGLRDENAKGQWRWVDQTPFNPRRVFWHKNEPDNSQGENCVLVYVNDKQAWNDVPCNFEASRICKIPGTTLN

## 靶点信息

研究背景	This gene encodes a member of the C-type lectin/C-type lectin-like domain (CTL/CTLD) superfamily. Members of this family share a common protein fold and have diverse functions, such as cell adhesion, cell-cell signaling, glycoprotein turnover, and roles in inflammation and immune response. This gene is closely linked to other CTL/CTLD superfamily members on chromosome 12p13 in the natural killer gene complex region.
------	---

基因ID	338339
基因名	CLEC4D
Swiss	Q8WXI8
别名	CLEC4D;CD368;CLEC-6;CLEC6;CLECSF8;MCL;MPCL

## 产品验证



Western blot analysis of CLEC4D expressed in Mouse spleen,Rat lung using CLEC4D Rabbit pAb at 1:1000. Secondary antibody: HRP Goat Anti-Rabbit IgG (H+L) at 1:5000. Lysates/proteins: 30ug per lane. Blocking buffer: 5% non-fat dry milk in TBST. Detection: ECL Enhanced Kit. Exposure time: 120s.

## 实验步骤

访问官网浏览详情: [www.ablybio.cn](http://www.ablybio.cn)